

EVANGELICAL COMMUNITY HOSPITAL

OPENING DOORS



ANNUAL REPORT
2017

President's Message

Swimming against the healthcare industry current, Evangelical Community Hospital continues to expand its services and scope of specialties to meet the needs of its community.

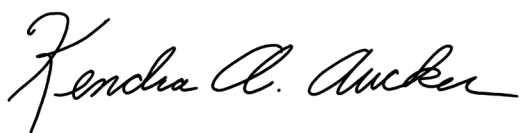
In fiscal year 2017, we opened doors—both literally and figuratively.

We opened the doors on the West Branch Medical Center, which now serves as home to our outpatient clinics, our new urgent care practice, and the newly minted Pain Medicine of Evangelical. We also opened a new SUN Orthopaedics and Physical Therapy practice at the Miller Center for Recreation and Wellness. We moved several business departments to a newly renovated space in the shopping plaza north of our campus, and we started work on re-imagining 210 JPM Road as the Center for Orthopaedics.

We opened new doors to better understanding and cooperation among departments and employees through a novel training exercise we called “Walk a Mile.”

We opened the door to improvements in the patient experience through standardized uniforms and new technology.

Through it all we remained as we do today—focused solely on providing the best possible care for the community we all call home.



Kendra Aucker, President and CEO





Table of Contents

3	New Spaces, New Services	19	Board of Directors
7	From OB/GYN to The Family Place	21	Donor Report
9	No Appointment Necessary	32	Passion for the People
12	Standardized Uniforms	41	Memorial Report
13	IT in Motion	45	Honor Report
15	Walk A Mile	49	Financial Report
18	Relief from Pain	51	Community Benefit Report



New Spaces, New Services

Growth supports commitment to patients, employees

From the outside looking in, and from the inside looking out, things are always moving at Evangelical. Fiscal year 2017 was no exception with leadership continually evaluating ways to add new services and enhance current ones to meet patient and employee needs.

West Branch Medical Center

Construction began on January 4, 2016, for the new 29,000-square-foot facility that would eventually be named West Branch Medical Center.

Located on Route 15 just south of the Hospital's main campus, West Branch opened to patients in November 2016 and houses an urgent care center, a combined family medicine practice, and outpatient services including diabetes, wound and hyperbaric medicine, bariatrics, pain medicine, and a walk-in lab.

The addition of West Branch enhances the outpatient services Evangelical has been offering for years and branches out in the form of urgent care, a service that has been identified as wanted and needed by patients in the area.

Urgent care—the only service of its type available between Williamsport and Shamokin Dam—offers lower-cost care for non-life-threatening medical needs, extended hours, efficient patient flow, and shorter wait times in a no-appointment-needed environment. Urgent care patients can have X-rays done in-house, eliminating the need to travel elsewhere for imaging.

The modern facility boasts several major conveniences, including ample parking and the ability to accommodate a large number of patients who can be seen in the numerous and comfortable exam rooms.

West Branch also offers a dedicated suite for hyperbaric chamber treatment of wounds and other conditions, a C-arm suite in the pain medicine area to facilitate imaging during treatment, onsite point-of-service lab testing to make traveling to other locations unnecessary, and diabetes and bariatric areas featuring care from such experts as trainers, nurses, dietitians, and surgeons.

North Business Offices

A major advancement for employees was the addition of the North Business Offices in Plaza 15, near Big Lots. Located directly across from the Hospital's main campus, the new site offers expanded office space for employees of Evangelical's Financial Division including Revenue Cycle, Managed Care Contracting, Cash Application, Patient Accounts, and Central Scheduling.

The relocation of those employees created a better working environment. By joining those employees in one space, there is better workflow and oversight among the departments, and more efficiency in the delivery of financial services.

Employees began enjoying their new work environment in May 2017.



North Business Offices in Plaza 15

Miller Center for Recreation and Wellness



SUN Orthopaedics and Physical Therapy at the Miller Center for Recreation and Wellness

Evangelical announced the opening of a new orthopaedics branch and physical therapy space at the Miller Center for Recreation and Wellness after a year of construction. Staff began seeing patients at the new location on July 17, 2017.

The Hospital finished its 8,500-square-foot office of SUN Orthopaedics of Evangelical and Physical Therapy of Evangelical at 112 North 15th Street, Lewisburg, in early July. The easily accessible Miller Center location provides convenience to patients by offering services in addition to Evangelical's four orthopaedics offices and 10 physical therapy offices located throughout the Susquehanna Valley.

The new orthopaedics facility features six patient treatment rooms, allowing physicians and advanced practitioners to efficiently move patients through the diagnosis and treatment process. Imaging services specific to orthopaedic needs are also available onsite. The physical therapy gym includes the latest in rehabilitative equipment and is the new location for services previously provided at 210 JPM Road, Lewisburg.

Center for Orthopaedics

As SUN Orthopaedics of Evangelical continues to expand to meet the orthopaedic needs of patients of all ages, it has outgrown its current space at 900 Buffalo Road.

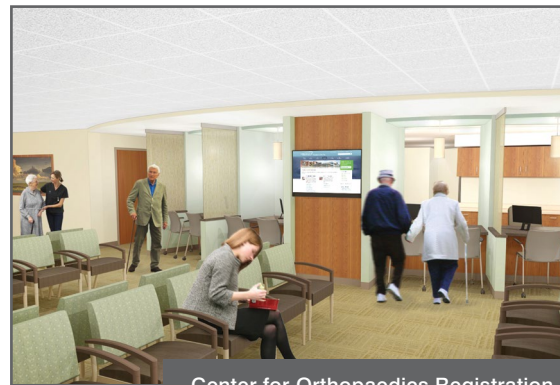
Construction began in August 2017 on the Hospital campus with an eye to creating a new central practice space that will greatly enhance the orthopaedic experience. Changes are being made to the first-floor lobby, to a portion of the second floor, and to the entire third floor of the existing 210 JPM Road building. When completed in early summer 2018, the new 18,960-square-foot space will feature more expansive and private check-in and check-out areas.

SUN Orthopaedics' eight orthopaedic specialists will be able to see patients in 28 exam rooms, two of which will be special casting rooms. There will be two imaging rooms with state-of-the-art equipment, complete with their own waiting rooms. This doubles the capacity for imaging compared to the current location. In addition each exam room will have integrated technology and a flat-screen monitor to view X-ray images with the patient.

The practice will continue to provide comprehensive orthopaedic care, with expertise in every type of orthopaedic condition—from common sports medicine problems to complex traumatic injuries—at the new location.



Center for Orthopaedics Lobby Area



Center for Orthopaedics Registration Area

The Ambulatory Surgical Center on the first floor will see a renewed look and continue to serve patients with minor surgical needs in the location.

The Thyra M. Humphreys Center for Breast Health will continue at 210 JPM Road with a look toward relocating in the future.

EVANGELI COMMUNITY HO



Spiderman visits whenever he is called to help children who may have arrived in the Emergency Department or have been admitted to the pediatric unit. He's been known to swoop in and save the day on more than one occasion to calm fears and make the Hospital a more comfortable place for the smallest of patients. He's also been known to cheer an adult or two along the way! Spiderman wishes to keep his true identity a secret—but it can be said that under the Spidey uniform a local college sophomore is providing this gift to patients.



From OB/GYN to The Family Place

Why one area woman keeps coming back

For Lynley Smith of Mifflinburg, choosing OB/GYN of Evangelical for her women's health needs was pretty easy. "My mom and sister went there, so when it came time to start seeing someone at the age of 18, that's where I chose to go. The women in my life trusted them, so I did too," said Lynley. When it came time for the next stage of her life—to have a baby with husband Ryan—she continued with OB/GYN knowing she would deliver at The Family Place, where both she and her husband were born.

The Smiths have two sons, Jaxson, age 4 1/2, and Maxwell, who was born in March 2017. For her first pregnancy with Jaxson, everything was new. She took advantage of the prepared childbirth classes held through Community Health and Wellness, and when it came time to deliver, had a relatively short labor.

"Our first experience at The Family Place was so good," said Lynley. "The midwife was great and the nurses were so reassuring, we couldn't have asked for a better experience as we got used to the idea of being new parents."

When it came time four and half years later to deliver Maxwell, they continued with OB/GYN of Evangelical and The Family Place.

The second birth was a little different because Lynley experienced high blood pressure and the decision was made to induce her.

"The midwife and the nurses were very helpful and checked in with me frequently to make sure I was comfortable and doing okay," Lynley said.

She was more than okay when after only a few hours of labor, Maxwell arrived happy and healthy. When thinking about what might have changed between the births of her children, Lynley reflected that the care was the same, the atmosphere was different. Lynley experienced The Family Place pre- and post-renovation, and ironically enough, in the same room.

“The second time around definitely had a more homelike feel, the room was cozy and felt less like a hospital,” she said.

“And my husband greatly appreciated the pull-out bed that was in the new room compared to the reclining chair he slept in after the birth of Jaxson.”

“I also liked being able to order my meals from a menu, what I wanted to eat, when I wanted to eat,” she said. “That was something truly new and appreciated.”

As for the education The Family Place gave to the Smiths before they went home, Lynley said, “With Jaxson those pieces were so helpful because everything was brand new, and with Maxwell, it was good to have a refresher to make sure we were doing everything right to take the best care of our sons.”

*“Everyone was so good to us,
that’s why we came back.”*

—Lynley Smith, Mifflinburg



Sue Connell, Certified Nurse Midwife, OB/GYN of Evangelical (left) and Jennifer Sullivan, RN, BSN, The Family Place (center) with the Smith family, whose sons were born at The Family Place.



No Appointment Necessary

Urgent Care Practice Answers Community Need

Heather Petrovich, Medical Secretary (left)

Urgent care—providing quick, convenient, and more economical care for non-life-threatening illness and injury—is among several innovative programs changing the way people maintain their health and wellness.

It serves to fill the gap when a visit to the emergency department isn't necessary and a primary care provider isn't available. This can happen on the weekends, in the evenings, or when the primary care office is simply too busy to schedule an appointment immediately.

In November, Evangelical Community Hospital unveiled an urgent care practice as part of the organization's new 29,000-square-foot West Branch Medical Center, located on Route 15 just south of the Hospital.

With no similar service provided between Shamokin Dam and Williamsport, the Hospital's leadership team was confident the new clinic would be supported by area residents. Just how supportive they were was a surprise to all.

"We're constantly looking at our community and asking if we are meeting the needs of those who count on us for healthcare," said Kendra Aucker, President and CEO at Evangelical. "We knew this was an underserved portion of the healthcare spectrum; we just didn't realize how underserved!"

The first clue came in November when more than 800 community members attended an open house to explore the facility and get a better understanding of what urgent care is and what it would mean to local residents.

"I was amazed by the turnout at our open house," said Aucker. "It underscores what I've said to our employees on several occasions—Evangelical is an irreplaceable healthcare resource, and we are truly loved and supported by the community we serve."

In the practice's first full week of operation, providers saw more than double the number of patients expected. And that trend has only continued.

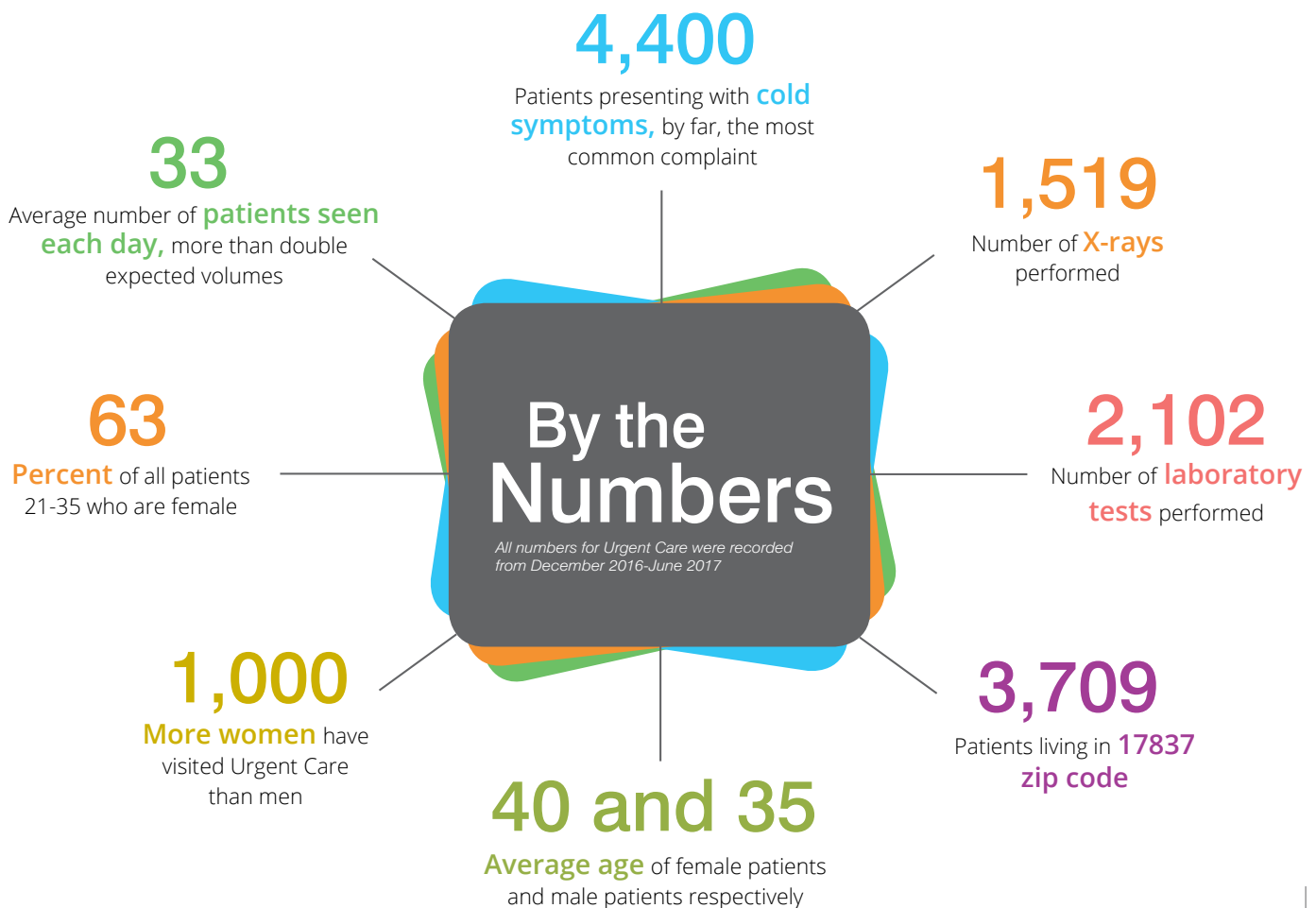
Urgent Care has averaged more than 33 patients a day over the first seven months of operation. More than 1,500 X-rays and 2,100 laboratory tests have been performed in the same time frame.

As residents continue to flock to the new service, Evangelical is adding to the urgent care team. More employees and providers will allow the practice to expand its hours of operation.

Unique Collaboration

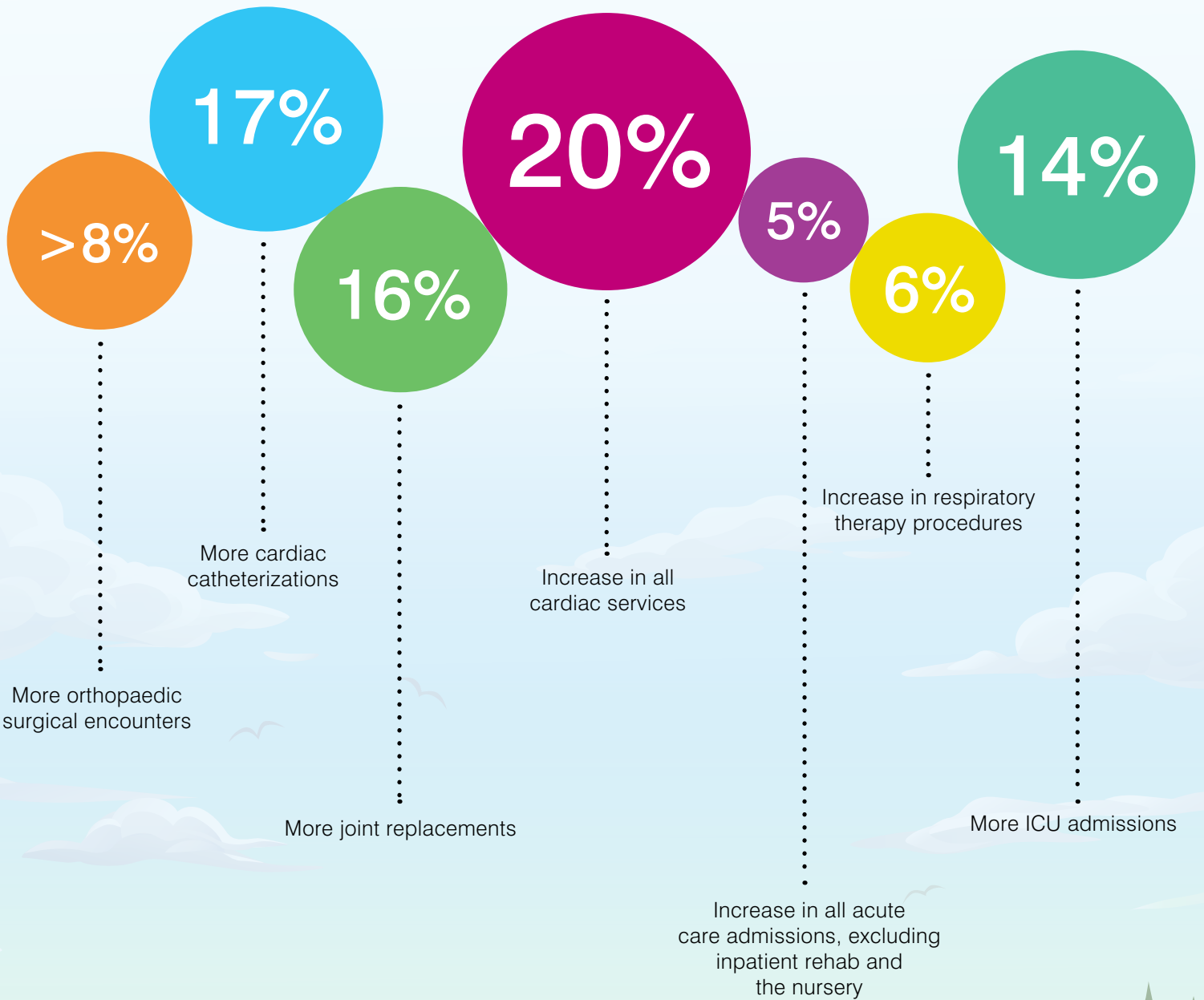
Urgent Care of Evangelical was successfully launched in part due to a collaborative agreement with Geisinger CareWorks.

"Geisinger has developed a proven urgent care model in our region," said Brian Wolfe, Vice President of Physician and Clinic Practices. "It made sense to tap them for their operational knowledge and benchmarking to ensure a successful launch for such a critical service to our community."



Evangelical Community Hospital's Growth Statistics

All statistics represent a comparison between fiscal year 2016 and fiscal year 2017



Standardized Uniforms Create Sense of Comfort for Patients

For a patient, there is safety and comfort in knowing who is providing his or her care while at Evangelical. While names may escape the mind, visually knowing who is in the room is paramount.

Quick identification of care team members for patients and guests was the goal of a cross-departmental team of Hospital leaders who met over a six-month period to discuss employee uniforms.

Employees were asked to provide input through a survey regarding uniforms. The majority of the 560 employees who took the survey accepted and supported the change and weighed in on color preferences.

Other healthcare organizations that have adopted a model of standardized uniforms have reported patients and guests appreciate the ability to recognize their care team members by sight. In addition, some surveys have shown improved perception of professionalism after transitioning to standardized uniforms for teams with regular patient interaction.

All Hospital-based nursing personnel—RNs, LPNs, and nursing support such as nursing assistants—as well as Environmental Services moved to the new system on July 1, 2017.

To address the most vocal concern of staff around fit and comfort, a variety of approved vendors and styles were provided from which they could choose. RNs and LPNs are wearing navy blue. Other Hospital-based nursing personnel wear ceil blue (light blue). Environmental Services moved to a dark green.

The second phase of implementation will take place by the end of 2017. Personnel moving to standard colors will be Laboratory Services, Imaging Services, Plant Engineering, Nutritional Services, Rehabilitation Services, Cardiopulmonary Services, Exercise Physiologists, Patient Access, Laboratory, and EMSO clinics and physician practices.



Pictured (from left): Nicole Alexander, Environmental Services Technician, Margaret Wiand, Nursing Assistant, and Josh Garbera, RN.

IT in Motion

Technology continues to drive efficiency, quality

Like many other aspects of the healthcare industry, information technology is evolving almost on a daily basis. New systems and tools bring with them the promise of increased efficiency and improved patient safety.

Evangelical pushed several new initiatives to completion in fiscal year 2017, each ultimately tied to the organization's true focus—its patients.

DB Motion

A step toward full integration, this now gives employees and providers the ability to toggle between inpatient and outpatient electronic health records without being forced to log out of one and log into the other.

Dragon Medical 1

Dragon Medical 1 moves providers from the slower process of dictation to a streamlined patient and treatment notes process.

Stratus Translator

Equipped with video screens, the new stratus translators give patients for whom English is not their first language the opportunity to communicate more fully—including facial expression and gestures—with care providers.

Patient Monitoring

After the Emergency Department was moved to a new patient monitoring system, the entire Hospital was upgraded to a system that pushes a patient's vital signs directly into the electronic health record.



Fiber Loop and Plaza 15

Every building on the Hospital's campus, as well as those adjacent to it, are now connected to the high-speed fiber loop. In addition, several departments with significant IT needs were relocated to a new space across Hospital Drive.

Downtime Processes

Procedures are now in place across the organization to continue delivering high-quality patient care when any software system has been compromised.

Meaningful Use 2

Every eligible provider employed at Evangelical is meeting Meaningful Use 2 qualifications.

Cloud Migration

Several key systems—Infor/Lawson, Optimum Patcomm, and Allscripts SCM—were moved to a cloud server to speed processing and free up needed space on the Hospital's physical servers.

As the organization moves into fiscal year 2018, a pause has been scheduled, giving IT team members the opportunity to optimize existing systems.



Morgan and his owner, Kathy Sheaffer of Middleburg (left), and Mac and his owner, Paula Zechman of Mifflinburg (right), stop by the Hospital a couple of days a week. They greet guests as they come into the main lobby of the Hospital and visit patients on the floors as necessary or when requested. Most of all, they provide a stopping point for employees who may just need a special visit to brighten their day.



Walk A Mile

Understanding is Key to a Better Workplace

Pictured (from left): George Rudy and Terry Spriggle, RN

An unknown source has been quoted:
“Walk a mile in my shoes...

See what I see,
Hear what I hear,
Feel what I feel...
Then maybe you’ll understand,
Why I do what I do...”

When working in individual departments of a larger healthcare facility, it is easy to lose touch with how all parts work together to provide the best possible service to patients. To cross those departmental barriers of understanding, Walk a Mile training was introduced to all full- and part-time employees.

Designed as a blended learning curriculum, employees were given a choice of how to complete the Walk a Mile requirement:

- Attend an hour-long, open-enrollment session featuring a particular Hospital department
- Spend one hour job-shadowing another employee
- Attend a speed meeting that allowed co-workers from various department to share with each other the responsibilities of their departments and the roles they play
- Participate in a supervisor-approved creative approach to the assignment

Employees embraced the challenge and gained interesting stories and perspectives.

Nursing Meets Plant Engineering

Terry Spriggle, RN, Director of Medical/Surgical, chose to shadow George Rudy, Facility Project Manager Coordinator/Team Leader of Plant Engineering, as her Walk a Mile training.

For over an hour, she and George traveled from one work site to another making furniture deliveries and checking on the status of projects that were active. That included a trip to the SUN Orthopaedics and Physical Therapy offices at Miller Center for Recreation and Wellness, a check-in at the newly finished North Business Offices in Plaza 15, and a walk-through of the future Community Health and Wellness space in the Professional Office Building.

George explained that a walk-through is done at the beginning of the project for spacial planning and evaluation of what needs to be done and at the end or right before a move to ensure all of the necessary details have been considered and will be completed for an efficiently operating space.

“Through the time with George, I gained a better understanding of just exactly how busy he is on any single day,” said Terry, who has been an Evangelical employee for 27 years. “He is involved in so many things that make a whole plan work, and I can now better appreciate when he says I have to wait for something on my floor if it is not a priority of the moment.”

George, who has been with Evangelical for 25 years, has had a good working relationship with Terry over the years. “I’ve always seen how busy the unit is from my work there and appreciated what Terry deals with

day-to-day,” he said. “Right now we’re working on an IT/television upgrade that requires Terry and I to be in close communication about what rooms I can work in and when, so there is as little disruption to her work and the patients as possible.”

“I’ve always appreciated George’s ability to be positive, to assure me that we can do this,” said Terry. “He always keeps me updated so I know that what we need to accomplish will get done.”

“The real value in the exercise was seeing that in our day-to-day work, we may see only one aspect of what the other person is responsible for, which limits our understanding of how much is really on their plate.”

—Terry Spriggle, RN

OB/GYN of Evangelical and The Family Place—Serving the Same Patients

Nichole Pirraglia, RN, BSN, The Family Place, spent six weeks walking a mile at OB/GYN of Evangelical as a way to generate ideas on how the department and the practice could work together.

“The reality is we serve the same patients—they have them for nine months before they come to us to give birth, but that transition of care is so important for the best possible patient experience,” said Nichole.

During her time at OB/GYN, Nichole assisted in whatever way needed, which included serving as telephone operator, conducting phone triage for concerns patients called in, and assisting with PAP exams and other nursing duties done in the practice.

One area that she noticed could make a major difference for both offices was in relation to fetal monitoring for non-stress tests. Both OB/GYN and The Family Place perform the test, but at the practice if they can't get an adequate fetal tracing on the monitor, they transfer the patient to The Family Place. Nichole realized that if OB/GYN could get better non-stress tests during a patient visit in the office, it would mean less inconvenience and shorter waits for the patient. She worked with the nurses one-on-one to give them tips and tricks they've used at The Family Place to help obtain better outcomes for non-stress tests in the office setting.

"The staff was appreciative and responsive to having that information and seeing firsthand how to do the test in different ways than they already knew to produce better results," said Nichole.

And it worked in reverse, as several nursing staff shadowed Nichole in The Family Place to see how what they do ties into the birthing needs of the patient.

"I walked away with a deep understanding of the processes, equipment, and duties at OB/GYN of Evangelical and could bring that understanding back to my co-workers at The Family Place," said Nichole. "When you work on a unit, you make assumptions about how things happen at the departments that work with you from the outside. Those assumptions can be wrong on many levels."

"At the end of the day, we are not in competition with one another but instead are working for the same goal—safe care for the patients so they can have the most positive experience possible on every level, from pre-birth care to delivery to post-birth care."

The Walk a Mile training was designed to allow employees to see the big picture of healthcare delivery at Evangelical. These examples, just two of many across the organization, magnify how every employee in every department plays a role in successful patient experiences.



Janette Farley, RN, and Nichole Pirraglia, RN, BSN, The Family Place, perform a non-stress fetal monitoring test on Anna Tanner.

New Location and New Physician Bring Relief from Pain



Shiyi Aba-Yao, MD, explains a diagnosis to Gregory Kramer.

Pain Medicine of Evangelical officially opened at its new location inside the West Branch Medical Center in April 2017. With its opening, the final piece of the West Branch offerings was in place.

Roughly 100 million Americans live with chronic pain. Whether they experience an annoying discomfort or an agonizing disability, patients can find relief through an integrated approach with the help of the experts at Pain Medicine of Evangelical.

Under the direction of Shiyi Aba-Yao, MD, a board certified anesthesiologist and pain medicine specialist, patients can expect treatment plans with prescription alternatives to narcotics and opiates and adequate-strength, over-the-counter options. These include non-steroidal anti-inflammatory drugs (NSAIDs), corticosteroids, and antidepressants. These may be used in conjunction with other treatments such as steroid injections, which are especially

helpful for neck or back pain; trigger-point injections for nerve-related muscle pain; or acupuncture.

Dr. Aba-Yao brings more than two decades of experience in anesthesiology and pain medicine to her patients. She's no stranger to Evangelical—in 2000 she helped to establish a pain clinic at the Hospital, treated a wide variety of pain conditions at the Evangelical Ambulatory Surgical Center, and has been a courtesy staff member since 2011.

In addition to the opening of Pain Medicine of Evangelical at West Branch, where procedures are performed, Dr. Aba-Yao and staff continue to schedule routine patient visits at her former practice in Williamsport. Through both locations of Pain Medicine of Evangelical, more patients will be able to find relief from pain conditions that hinder enjoying life to its fullest.

BOARD OF DIRECTORS FISCAL YEAR 2017



BOARD MEMBERS

Timothy J. Apple
Julie A. Barna, DMD
R. Brooks Gronlund
Roger S. Haddon Jr.
Mark D. Huber
Jeffrey J. Kapsar
Amanda G. Kessler, Esq.
Linda J. Korb, PhD, NCPsyA
Shawn P. McGlaughlin, MD
John E. Meckley, Esq.
Timm A. Moyer
Janice Omlor, DO
Julia E. Redcay, DO
Matthew W. Reish, MD
J. Donald Steele Jr.
Dennis W. Swank
Henry A. Truslow IV
P. Ronald Zug, MD

BOARD OFFICERS

Julie A. Barna, DMD – Chair
John E. Meckley – Vice Chair

CORPORATE OFFICERS

Kendra A. Aucker, President/CEO
James A. Stopper, Treasurer
Angela J. Hummel, Secretary

EX-OFFICIO MEMBERS

Kendra A. Aucker
Christopher J. Motto, MD
James R. Patterson, MD

DIRECTORS EMERITUS

James G. Apple
Martha A. Barrick
John D. Griffith
Robert L. Gronlund
Sara G. Kirkland
John H. Mathias
Fredrik B. Paulsen Jr.
William G. Reish, MD
Norman S. Rich

SOLICITOR

Mark VanBlargan, Esq.



Timothy J. Apple
Director of Sales
Bimbo Bakeries USA
(BBU)
Lewisburg



Amanda G. Kessler, Esq.
CEO/General Counsel
Synergy Grandview
Pharmacy Inc.
Northumberland



Julia E. Redcay, DO
Physician
OB/GYN of Evangelical
Lewisburg



Julie A. Barna, DMD
Dentist
Two Dental Divas
Lewisburg



Linda J. Korb, PhD,
NCPsyA
Milton



Matthew W. Reish, MD
Orthopaedic Surgeon
SUN Orthopaedics of
Evangelical
Lewisburg



R. Brooks Gronlund
President /COO
Wood-Mode, Inc.
Kreamer



Shawn P.
McGlaughlin, MD
Physician
Family Medicine of
Evangelical
Lewisburg



J. Donald Steele Jr.
Chairman/President/CEO
The Northumberland
National Bank
Northumberland



Roger S. Haddon Jr.
President/CEO
Sunbury Broadcasting
Corporation
Sunbury



John E. Meckley, Esq.
Attorney
Milton



Dennis W. Swank
Associate Vice President
of Finance
Bucknell University
Lewisburg



Mark D. Huber
Chief Information Officer
Susquehanna University
Selinsgrove



Timm A. Moyer
Co-Founder
Mojo Active, Inc.
Watsonstown



Henry A. Truslow IV
President
Sunbury Textile Mills
Sunbury



Jeffrey J. Kapsar
President/CEO
Mifflinburg Bank &
Trust
Mifflinburg



Janice Omlor, DO
Anesthesiologist
Anesthesiology of
Evangelical
Lewisburg



P. Ronald Zug, MD
Medical Director
Hospice of Evangelical
Lewisburg

DONOR REPORT FISCAL YEAR 2017

We are pleased to recognize the following friends of the Hospital for their generosity and support. These individuals, corporations, organizations, and foundations provide for Hospital services, capital, and endowment needs.

THESE DONORS HAVE MADE GIFTS FROM JULY 1, 2016, THROUGH JUNE 30, 2017.

Lystra E. Rogers' Society	\$50,000 and Above	President's Associates	\$1,000 – 2,499
Founder's Society	\$25,000 – 49,999	Friends of the Hospital	\$500 – 999
The 1926 Club	\$10,000 – 24,999	Patron Plus	\$250 – 499
President's Associates - Gold	\$5,000 – 9,999	Patron	\$1 – 249
President's Associates - Silver	\$2,500 – 4,999		

LYSTRA E. ROGERS' SOCIETY

The 1994 Charles B.
Degenstein Foundation
Priscilla A. Merritt Estate
The Donald B. and Dorothy L.
Stabler Foundation

FOUNDER'S SOCIETY

Anonymous
James G. & Patricia Apple
John Family Foundation
Quandel Construction Group, Inc.
Ralph & Josephine Smith Fund
at the First Community Foundation
Partnership of Pennsylvania

1926 CLUB

Jim & Carole App
Walter & Allethea Bruce
Mary & Douglas Candland
Charles Foundation, Inc.
Cornerstone Advisors
Evangelical Community Hospital
Medical Staff
Fidelity Charitable Gift Fund
Geisinger Health System
Robert & DeOnne Gronlund
Mifflinburg Bank & Trust
Northumberland National Bank
Barbara J. Perella
Remmey Pallet
Norman & Phyllis Rich
Stantec
Ta Ta Trot
VNA Health System

PRESIDENT'S ASSOCIATES – GOLD

Albright Care Services
Anonymous
Jeanne & Alex Bernt
Blaise Alexander Ford, Inc.
Bucknell University
COLDWELL BANKER Penn One Real
Estate, Inc.
David & Roberta Cornelius
Michael & Carolyn Daniloff
The Eye Center of Central PA
Family Practice Center, PC
Geisinger Health Plan
John & Sue Griffith
Mary Ann Hamilton
Dr. & Mrs. John L. Holmes
Jersey Mike's Subs
Lamar Advertising
McNees Wallace & Nurick
Members Choice Financial
Credit Union
Mary A. Miller
Roderic R. Moore
Office Depot/Office Max
The Philadelphia Foundation
William & Teresa Robinson
Eleanor B. Shelly
Silvertip, Inc.
Dr. & Mrs. Thomas C. Smith
Helen S. Snook
The Susan G. Komen Breast
Cancer Foundation
Swineford National Bank
Vanguard Charitable
Watson town Brick Company
Weis Markets, Inc.
West Milton State Bank
Jacqueline Wottrich

PRESIDENT'S ASSOCIATES – SILVER

Alexander Pontiac Buick Cadillac
GMC Truck
Anonymous
Ms. Kendra Aucker & Dr. Margaret Lehr-Devold
Baker, Tilly, Virchow, Krause, LLP
Alan & Martha Barrick
Bowen Agency Realtors
Citizens' Electric Company
The Daily Item
Dunkin' Donuts
Jim & Carole Friery
Amy & Brooks Gronlund
Roger & Denise Haddon
Heritage Springs Memory Care Inc.
Elliott & Linda Korb
Mark & Marianne Krammes
Kreations by Kris Florist
La Primavera Italiano Ristorante
& Pizzeria
McCormick Law Firm
Dr. & Mrs. Shawn P. McGlaughlin
Mercedes-Benz, Audi, Volvo of
State College
New Berlin American Legion
Home Association
Robert F. Pardoe Jr.
James & Alison Patterson
Quantum Imaging & Therapeutic
Associates, Inc.
Dr. & Mrs. W. Gale Reish
Richard & Miriam Robey
Rowe Sprinkler Systems
Santander
Darlene M. Sharp
Dr. Douglas A. & Sue Ellen Spotts
Mary Jane Stackowski, MD*

Julia & Todd Stefan
Earl & Joyce Stogner
Sunbury Broadcasting Corp.
Sunbury Textile Mills, Inc.
Wood Mode, Inc.
Jan & Ron Zug

PRESIDENT'S ASSOCIATES

Thomas R. & Keri L. Albright
William P. Anderson III
Anonymous
Carol & Tim Apple
Arraya Solutions
Balfurd Linen Service
Dr. Julie Ann Barna & Mark Veraguth
Bayard Printing Group
Baylor-Hamm Companies
Clarence & Dorothy Beiler
Louis & Joyce Betz
Darshan K. Bhangdia, MD & Maria
Fasano Bhangdia, MD
Bingaman & Son Lumber, Inc.
Black Dog Jewelers
Jenny Boyle, MD
Buffalo Valley Supply Corp.
BZ Motors Chrysler-Dodge-Jeep-Ram
Capital BlueCross
John P. Carpenter
The Centurion Group, LLC
Chilly Willys, LLC
Christ Wesleyan Church
Tom & Lois Clark
Daniel & Elizabeth Clement
Consolidated Graphic Communications
Richard I. Crossland Sr.
Custom Care Pharmacy
Harry L. Dailey
Chris & Angela Darrup & Family
Mr. Raymond E. Davenport
David M. Maines Associates, Inc.
Dr. & Mrs. John F. Devine
Dorothy V. Douglas
Cheryl A. Dugan
EMC Corporation
Enhanced Management Services, Inc.
Hildy Ferrigno*
Fike Brothers Carpet One
Terri H. Fortuna
Foss Jewelers
John & Elizabeth Furia
Furmano's
G. Scott & Bessie K. Guyer Foundation
GE Foundation
Dave & Jody Geise
Genentech Foundation
Giant Food Stores
Good Done Great

Carl & Pam Haga
Jonathan & Carol Hahn
Paul & Peggy Hassinger
Thomas & Margie Heggenstaller
Corey & Jenise Hoffman
Titus & Mary Hoover
Horizon of Hope Committee
Hospital Billing & Collection Service
Mark & Colleen Huber
Jeffrey & Angela Hummel
InFaith Community Foundation
Interior Construction Specialists, Inc.
Ken & Corey Jusko
Jeff & Beth Kapsar
Amanda G. Kessler & Andrew Misener
Keystone Communications
Peter K. Kresl & Lois Svard
Sharon & Bob Kribbs
Albert & Ginger Lagerman
Lecce Electric, Inc.
Paul S. Lin, MD
Tom & Cindi Martin
Mayberry Hospitality LLC
Elizabeth B. McInnis
Dr. & Mrs. Arthur H. McTighe
McVicar Video
John E. Meckley III
William & Carol Metzger
Mid-Penn Engineering Corp.
Miller Travel Agency
Millmont West Union Area Lions
Mirror Image Fashions by J. Kleinbauer
Marilyn R. Mook
Mr. & Mrs. Dale E. Moyer
Timm & Kristen Moyer
Bradley J. Mudge, DO
Dr. & Mrs. William T. Musser
The Mustard Seed
Miriam Naugle
Nottingham Village
NRG Controls North, Inc.
NWN Corporation
Frank & Janice Omlor
Original Italian Pizza - Lewisburg
Original Italian Pizza - Mifflinburg
Robert E. Paterson
Mr. & Mrs. William L. Patton
PenTeleData
The Pepsi Beverages Company
Jim & Tamara Persing
PPL Electric Utilities
Barney* & Flora Price
Project Linus Central SV Chapter
Prudential Retirement
Purdy Insurance Agency
Florence & Saul Putterman
Eric & Heather Pyle

Quality Print Shop, Inc.
Jennifer & Matthew Reish
Nancy L. Ritzman
Edward & Judy Robinson
Jason C. Robinson
Mr. & Mrs. Donald C. Ruhl Jr.
Sage Technology Solutions, Inc.
Jeffrey & Melanie Schreffler
Richard & Donna Schuck
Service Electric Cablevision
Kathleen Shafer & Family
Manzoor A. Shah
Barbara & John Sirianni
Cindy & Dick Skelton
Gary & Sandy Sojka
Stahl Sheaffer Engineering, LLC
Dr. & Mrs. Russell Stankiewicz
J. Donald Jr. & Joanne K. Steele
Elsbeth Steffensen & Family
Elvin & Molly Stoltzfus
Jim & Elise Stopper
Susquehanna Life Magazine
Susquehanna Valley Country Club
Paul & Marsha Tarves
Hank & Jan Truslow
Pedro H. Valdes
VFW Auxiliary to Selinsgrove Post 6631
Villager Realty
Victor Vogel, MD
Allen W. Walter
Brian & Lindsie Wolfe
Charles & Corey Woodcock
Dennis & Jill Yerger
Mr. & Mrs. Gene D. Zartman

FRIENDS OF THE HOSPITAL

Albright Footcare Center
John & Noreen Allison
Anonymous
B.C. Painting
Bank of America Foundation
David W. Bastian
Mr. William Becker
Michael & Ann Beckley
Mr. & Mrs. Edward S. Bennage Jr.
Iva G. Berge
Chris & Heidi Bingaman
Carol J. Blank & Helen S. Nunn
Kim Bowers-Antolick
Debra K. Bowes
Paul & Carol Brann
Gerald & Margaret Briskey
Drs. Michael & Jan Brown
Bucknell University
Athletic Department
Buffalo Valley Lutheran Village
Carriage Manor Builders, Inc.

*deceased

Drs. David & Sue Ellen Castellan
Cole's Hardware
Andrew E. Dilatush
Leigh Donecker
Keith & Luann Dunlap
Karen M. Erdley
Evangelical Community Hospital-
Nursing Management Staff
Dr. & Mrs. Harlen W. Gessner
Great Dane Ltd. Partnership
F. Ellis & Jane Harley
Renee L. Hartman
Mr. Larue Hawley
Mr. & Mrs. David Heberlig
Hershey Country Club
Hiller Architectural Group
Kay Holdren
B. Jean Holtzapple
James A. Holtzman
Hoover Tractor
Kathleen E. Horne, DO
iSign
Susanna Kodlick Jackson
Jersey Shore State Bank
Drs. Naval & Nila Kant
Tim & Kris Karr
Dorris J. Keen

Kiwanis Club of Buffalo Valley in
Lewisburg, Inc.
E. H. Kleckner, Inc.
Jana & Braden Klinger
Nicholas & Sharon Klose
Margery S. Kranz
Lewisburg Builders Supply Co.
Liberty Travel
Nicole Lohr
William & Carolyn Mast
Ed & Mary Mastascusa
John & Susan Mathias
Marjie Maxwell
Mazeppa Union Church
Terry & Janet McLaughlin
Diane & Ted Meixell
David & Marlene* Mensch
The Mercantile
Dr. Steven C. Miller & Ms.
Ellen Gauthier
Millie Boutique & Jewelry Bar
Sandy Nelson
Brendon & Anita Nolt
Jennifer S. Novinger
The Open Door Gallery
Tucker & Val Orbison
Otis Elevator Company

Owens & Minor
Rik & Pam Paulsen
Sharon Pearce
Ronald & Shirley Peters
Pik-Rite
Professional Roof Services, Inc.
Bill & Mel Purdy
Bill & Jan Pursel
Jesse & Laura Ramsey
Jeffrey & Debra Ranck
Michael & Erin Redding
Ruth U. Rees
Donald & Vickie Reichenbach
Robert F. Remaley Sr.
Donald B. Remmey Jr.
Retrah
Richfield United Methodist Church
Riggs, Counselman, Michaels &
Downes, Inc.
Douglas L. Ripka
Robbins Marine
Mr. & Mrs. Bernard Sarsfield
Elsie & Harry Schenk
Scott W. Seebold
Selinsgrove Field Hockey Association
Service 1st Federal Credit Union
Dannette D. & Stuart P. Shebest

PHYSICIAN LEADERSHIP CIRCLE FISCAL YEAR 2017

1926 Club

Evangelical Community Hospital Medical Staff

President's Associates – Gold

Albright Care Services
The Eye Center of Central PA
Family Practice Center, PC
Thomas C. Smith, MD

President's Associates – Silver

Shawn P. McGlaughlin, MD
James R. Patterson, MD
Quantum Imaging & Therapeutic Associates, Inc.
Douglas A. Spotts, MD
Todd M. Stefan, MD

President's Associates

Thomas R. Albright, DPM
Julie Ann Barna, DMD
Louis H. Betz, MD
Darshan K. Bhangdia, MD & Maria Fasano Bhangdia, MD
Jenny L. Boyle, MD
Chris J. Darrup, DO
John F. Devine, DO
John P. Furia, MD
Kenneth L. Jusko, DO
Paul S. Lin, MD
Thomas L. Martin, MD
Arthur H. McTighe, MD
Bradley J. Mudge, DO
Janice Omlor, DO
Matthew W. Reish, MD
Manzoor A. Shah, MD
Russell J. Stankiewicz, MD
Victor G. Vogel, MD

Roger & Nancy Shuck
 Norman Sinclair
 Keith & Susan Smalley
 Robyn A. Snyder
 Soaring Eagle Security, Inc.
 Mr. & Mrs. Francis C. Soges
 Philip & Renee Sosland
 Southwest Airlines
 Dr. & Mrs. Ralph H. Starkey
 State Farm Companies Foundation
 State Farm Insurance
 Carol A. Steckel
 Dr. & Mrs. Donald C. Steckel
 Elam R. Stoltzfus, MD
 Susquehanna Valley Limousine Inc.
 Dennis & Kathy Swank
 Ray & Rachel Tomaszewski
 Robert E. & Dara L. Valentine
 Ms. Sharlee Van Horn
 Angelo Vieceli & Melody Ferrigno
 WalMart - Selinsgrove #2185
 Walmart Supercenter #1644
 Walt Disney World -
 Community Relations
 Stewart R. Watson Jr.
 Carol Waughen
 Nichole Weber, Olivia, & Nora
 Ronald & Kristen Wenning
 Willow Stoneworks, LLC
 Zartman Construction, Inc.
 Zenzinger, Inc.

PATRON PLUS

Chris & Warren Abrahamson
 Maurice & Laurie Aburdene
 Advanced Skin Care Associates
 Dean & Janet Albright
 Roger & Barbara Allison
 Allstate Insurance
 Amacher Family Fund of the Bank of
 America Charitable Gift Fund
 Ameriprise Financial
 Anonymous
 Katherine E. Asche
 Loretta L. Aurand
 Jennifer Bair
 Dorene R. Baker
 Bank of America Charitable Gift Fund
 Eileen R. Barnes
 Dr. & Mrs. Brian A. Batman
 Gary & Barbara Baylor
 Sandra S. Beiler
 Bella Salon & Day Spa
 Mr. & Mrs. Harshan Bhangdia
 Thomas J. Bitterly
 BlueLine Secure Transportation Services
 Linda & Jim Boose

Brooke A. Bowers
 Bradley Shoemaker Gallery
 Mr. & Mrs. E. Ross Browne
 Judy Bubnis
 Bucknell University Division
 of Communications
 Tina L. Burgess
 Deana J. Carson
 Dr. & Mrs. Daniel S. Case
 Central Builders Supply Company
 Closets Plus
 Robert Conner
 Brian J. Connolly
 James C. Corman
 The Country Squire
 Gary & Robina Cronrath
 CrossFit Lewisburg
 Ms. Billie Jo Day
 Mary Alice Deihl
 Dennis & Holly Deiter
 C. Laurie Deitrick
 Delta Dental
 Judith A. Downer
 E. L. Smeltz Automotive
 Elizabeth's - An American Bistro
 Richard & Judith Ellis
 Kevin Enright
 Eric Stashak Photography
 Evangelical Community Hospital
 Marketing & Communications
 Department
 Kathleen M. Evans
 Kelly Everitt
 Family Practice Center, P.C.
 Fleming Antiques
 Fox View Farms
 Naomi G. Freed
 Fusion-An ABF Boutique
 Angelo & JoAnn Giunta
 Sylvia Gleason
 The Gray Family - Clara Neele, Robert,
 Karen, & Skip
 Jeffrey & Carol Gruber
 Abby Gulden-Luthi
 Ken & Jeanne Hafer
 David & Ann Hilliard
 Dr. Jay & Jennifer Holthus
 Kathryn Irwin-Lentz
 Karen P. John
 Paul & Heidi John
 Lamar E. Keefer
 Todd & Teresa Keeley
 Brandy L. Kift
 Donald W. Klingerman
 Ms. Paula Klingler-Alba
 Terry & Pam Kramer
 Toby J. Krouse

Skip & Jill Kryston
 Nancy L. Kuhn
 Lauren Michaels Photography
 Robert & Shirley Lazarus
 Lewisburg Plastic Surgery
 Lewisburg Studio
 Julie Limauro
 Mrs. Mary J. Lippert-Coleman
 Dr. & Mrs. John C. Malloy
 Linda J. Mann
 Mr. & Mrs. Samuel A. Marolo
 Tim & Janet Marsh
 Jean M. Maurer
 David & Ruth McCord
 Amanda Meixell
 Meixell - Diehl Insurance Agency
 Linda L. Mensch
 Merck Company Foundation
 Christopher & Karen Meyer
 Jen & Bobby Miller
 Ms. Nancy L. Miller-Boyer
 Elise A. Mills
 Jeannette M. Mitteer
 MoJo Active, Inc.
 Doris M. Moore
 Nancy Moser
 Christopher J. Motto, MD
 Marianne & Jere Motto
 Dr. & Mrs. Bradley K. Moyer
 Shannon G. Moyers
 Eustacia S. Muir
 James Murphy
 Domenico & Stacey Napoli
 Anita & George* Nedostup
 George D. Nedostup
 Mrs. Mary G. Nelson
 Oberdorf Floor Coverings, Inc.
 Dr. & Mrs. Christopher D. Olson
 Isoken O. Osunde
 Sheila Packer
 David & Jan Pearson
 Marty & Patricia Powell
 Ian Proud
 Charlotte Rebeck
 Rick & Stacy Reibsome
 Todd Ross
 John & Wendy Rowe
 Patrick & Susan Ruane
 Debra Runkle
 Rusty Rail Brewing Co., LLC
 S. Metzler Trucking
 Sacred Heart Church
 Carol A. Salatti
 Salem Church of Rough & Ready
 Seven Mountains Media
 Siam Cafe
 Thomas & Linda Smith

Donna R. Snyder
 Larry & Kim Snyder
 Mary Snyder
 Kelly Solomon
 Laura E. Sowers
 Steinger's Laundry & Dry Cleaning
 Steinman Communications, Inc.
 The Stone Shop
 Randall S. Strausser
 Summer Breeze Stables
 SUN Area Technical Institute
 Susquehanna Valley Big Twins
 Motorcycle Club
 Cora Taylor
 Linda A. Trate
 Jinny Treas
 Trot Fitness, LLC
 Shirley A. Troutman
 Victor Tsui
 Bethany F. Umholtz
 Valley Testing And Balancing Inc.
 Vargo Outdoors, LLC
 Vermont Community Foundation
 Waverly Kennels
 Stephen & Jessica White
 Bennett R. Willeford
 Diane Wilson & Richard Relyea
 Curtis R. Yeager
 Erez & Marisol Yedid
 Lucas P. Yost
 Dr. & Mrs. David M. Zelechowski
 Zodiac Printeractive

PATRON

101 at the Brasserie Louis
 3D Glass LLC
 Don & Brenda Adams
 Donald P. Adams
 Edward & Jo Adams
 Phyllis Ahlborn
 Donna Aiello
 Howard & Barbara Aikey
 Kathryn M. Albert
 Ashley M. Albertson
 Altogether Beautiful Salon & Spa
 American Legion Post 182
 American Legion Auxiliary - Post 841
 American Legion Auxiliary Unit 71
 Edna M. Ammon
 Dorothy M. Anderson
 Norman R. Anderson
 Mrs. Olwen J. Anderson
 Anonymous
 Nevin & Shirley Anspach
 Stan & Bev Antonaitis
 David & Bernice Apple
 Jonathan & Brenda Apple

Bud & Patty Arbogast
 Mildred Arbogast
 Nancy J. Ard
 Cecil & Joyce Arnold
 Judith P. Ashby
 Karen S. Athey
 Heather L. Aucker
 Larry D. Augustine
 Leon G. Auker
 Ann & Mike Aurand
 Paula S. Auten
 Carolyn S. Aycock
 Barbara K. Bachman
 Mrs. Carriemae Bailey
 Pamela Bailey
 Mr. & Mrs. Stephen R. Bailey
 Kathleen A. Bailor
 Larry Bailor
 Frances A. Baker
 Gene M. Baker Sr.
 Kevin & Wendi Baker
 Charles L. Ballantine
 Gaetano & Antonetta Balsamo
 Baltimore Orioles
 John W. Barchet
 Martha B. Barclay
 Dawn K. Bard
 Barn Owl Art Studio
 Scott Barnes
 Eleanor R. Barrett
 Lise M. Barrick
 Helen J. Barsh
 Mary Ellen Bartholomew
 Romayne H. Bartholomew
 Richard & Helen Barto
 Mrs. Linda A. Basom
 Bill & Connie Bastian
 Loretta M. Bastian
 Mr. & Mrs. Robert W. Bastian
 Leako C. Bateman
 Dora M. Battram
 Mrs. Barbara M. Baumert
 Joanne R. Beatty
 Kevin & Kathleen Beatty
 Beaver Springs Volunteer Fire
 Company Ladies Auxiliary
 Thomas & Nancy Beaver
 Ms. Charlotte D. Becker
 Mr. & Mrs. Dartt M. Becker
 Mary A. Becker
 Mary E. Beckley
 Donna L. Behr
 Susan A. Behr
 Amos & Lydia Beiler
 Elam & Charlotte Beiler
 Gwen Beiler
 Bella's Bliss Bakery

Jan Bender
 William & Kathy Bender
 Florence M. Benfer
 Mary A. Benfer
 Dixie G. Benner
 James & Candace Benner
 John & Barbara Benner
 June C. Benner
 Mrs. Eva R. Bennett
 Norma J. Bennett
 Howard L. Benninger
 Frank T. Berbick
 Alan & Deborah Berger
 Brooke Berger
 Robert & Kaye Berger
 Lake E. Berkenstock
 Mr. & Mrs. Charles E. Berry
 Andrea & Brian Bertram
 Judith L. Bertram
 Marissa Bertram
 Mrs. Ina M. Betts
 Betty's
 Beyond Beauty
 David & Dayna Bickhart
 Bieber's Contracting Co, Inc.
 Ethel E. Bilger
 Mr. Chester A. Bingaman
 Dahle & Shirley Bingaman
 Mirriam Bingaman
 Max & Martha Bingaman
 Shirley A. Bingaman
 Charles E. Bingeman
 Spence & JoAnn Bingman
 Bing's Auto Body
 Donald L. Bird*
 Dottie & John Bird
 Kathleen Bishop
 Loella H. Bishop
 Mrs. Donna J. Bitner
 Terri Bitting
 BJ's Steak & Rib House
 Julie Black
 Robert & Lisabeth Black
 Ms. Barbara W. Blakley
 Judith A. Blee
 Bill & Janie Bloom
 Martin K. Bloom
 Bloomsburg Theatre Ensemble
 John & Darlene Bohn
 Arlene P. Bohner
 Karlyn M. Bohr
 Kenneth & Susan Bolig
 Linda L. Bollinger
 Rev. & Mrs.* David E. Bomboy
 Chad D. Boney
 Carl & Joanne Bonnell
 Mr. & Mrs. Daniel C. Boop

LEGACY CIRCLE FISCAL YEAR 2017

Margaret (Peggy) E. Acker*
Anonymous
Mr. & Mrs. James G. Apple
Dr. Julie Ann Barna & Mr. Mark Veraguth
Margaret S. Beekman
Amy M. Bell*
Max & Martha Bingaman
Mr. & Mrs. Ronald C. Blatchley
Mr. * & Mrs. Arthur R. Borden
Carrie Brouse*
Walter & Allethea Bruce
Margaret (Peg) L. Bryan*
Mr. George R. Burman Jr.
John P. Carpenter
Joseph J. Carroll
John M. Cooper
Helen M. Cotner*
Harry E. Culver*
Mr. & Mrs.* Raymond E. Davenport
David W. Diehl*
Robert W. Donehower*
Cathryne B. Dye*
Helen S. Evans*
Elizabeth (Betty) K. Frederick*
Mrs. Arthur J. Gelnett
Dr. & Mrs. J. Lawrence Ginsburg
John & Sue Griffith
Robert & DeOnne Gronlund
Carol S. & Jonathan F. Hahn
Robert S. Harder*
Mr. Lake L. Hartman
Marlin L. Hartman
Connie M. Heyman*
Mrs. Albert E. Humphreys *
Mary Ellen Jansen & Sons
William & Charlotte Laverty

Lawrence* & Marilyn Lawson*
Neal L. Lewis
John T. Lilley*
Mrs. JoAnne K. Lyons
John & Susan Mathias
Mrs. Margaret B. Mathias*
Priscilla S. Merritt*
Bill & Carol Metzger
Roderic R. Moore
William & Joan Moyer
Thomas B. Musser*
Dr. & Mrs. William T. Musser
Sandra J. Nelson
Mrs. Jane G. Norton*
Barbara J. Perella
Saul & Florence Putterman
Tami G. Radecke
Dorothy G. Reish*
Dr. & Mrs. W. Gale Reish
Mr.* & Mrs.* C. H. Renshaw
Norman & Phyllis Rich
Anna* & Bill Richard
George W. Robinson*
Carol Garman Schwartz
Bernice P. Secrist*
Scott Seebold
Kathryn T. Shade
Mr. Leslie E. Sheary*
Cindy & Dick Skelton
Jack Slear & Lon Pyers
Mary Jane Stackowski, MD*
Mary Jane Stevenson*
Dr. & Mrs. Tudor L. Thomas
Fitz* & Mary Jane* Walling
Kim A. Walter
Ellen L. Wenner*

Estella J. Boop
Richard & Susan Boop
Mary J. Bordner
Ginger L. Borich
The Borrelli-Washington Family
Mr. & Mrs. Roland A. Bostian
Connie L. Boughter
Steven & Tracy Boutelle
Mr. & Mrs. Christopher J. Bouton
Lillian M. Bower
Phillip H. Bower
Clair E. Bowersox
Laree Bowersox
Randall & Maureen Bowersox
Don & Nancy Bowman
Kim Boyd
David E. Boyer
Harry E. Boyer
Ms. Nancy L. Boyer
Shelley M. Boyer
Robert & Carol Bradford
Tayler Bray
Roy & Nancy Brenner
Robert Brigham & Mary Ann Brigham
Susan Perkins Brillat & Thomas Brillat
Shirley L. Brofee
Brookpark Pet Supply
Christie L. Brosius-Hunter
Gladys F. Brought
Angela & Chris Brouse
James E. Brouse Sr.
Donald & Nancy Brown
Linda M. Brown
Ms. Agnes Brubaker
Caroline M. Brubaker
Jason & Virginia Bruner
Wilma Bryan
Dr. & Mrs. Ion Bucaloiu
Margaret L. Buck
Buckeye Bakery
Janet M. Buckley
Bucknell Bookstore
Bucknell Golf Club
Bucknell Small Business
Development Center
Marguerite L. Budd
Buffalo Wild Wings
Dr. John B. Bulger & Dr. Michele Neff Bulger
Lori & Stan Bullard
Edith Burkholder
John & Gail Burnell
Dennis D. Burns
Arlene M. Burris
Joan L. Bush*
Virginia A. Butler
Elizabeth A. Bzdil-Mahoney

ESTATE GIFTS FISCAL YEAR 2017

Priscilla S. Merritt*



of Evangelical Community Hospital

*deceased

Coleen S. Cameron
Mr. & Mrs. Donald E. Campbell
Joyce M. Campbell
Judith A. Campbell
Campus Theatre
Canoe Susquehanna
Cardinal Concepts Group
Ms. Cathy D. Caris
Doris J. Carl
John W. Carl
Mrs. Robyn N. Carper
Stephanie H. Carr
Bob & Susan Caryl
Ms. Elizabeth Cash
Mr. & Mrs. Robert Catherman
Cathy's Hair Gallery
Daniel & Kathryn Cavanagh
Tammy J. Cawley
Ashley B. Chappell
Mr. Clyde A. Chappell
David Chappell
Ruth E. Chrismer
Christkindl Market of Mifflinburg,
Inc. – Executive Board
Floyd E. Christman
Mark & Kim Chrysler
Fannie L. Chupp
Joseph & Patricia Ciabocchi
Bob Clark
Holly J. Clark
Jennifer E. Clark
Larry & Theresa Clark
Randall W. Clark
Bill & Jeanne Clarke
Bonnie Clawser
James & Connie Clewell
Betty & Dave Clough
Robert D. & Joan A. Cohen
Charles L. Cole
Margaret Cole
Judith (Morgan) Comunale
Community Arts Center
Community Services Group
Staff Sunbury
Ray & Janet Confer
Vivian L. Confer
Michelle & Rick Conrad
Paulette Conrad
Mr. & Mrs. Michael P. Conroy
Gary C. Cooper
John M. Cooper
David & Jennifer Corderman
Josephine B. Coreau
Rebecca Cornish
Heather Coster
Alice W. Cotner
Country Farm & Home Center

Coup Agency Insurance
Joyce K. Coup
R. Jeffrey & LaCinda Coup
Rick & Judy Coup
John & Linda Courter
William F. Coveleskie
Dennis & Karen Cover
CPR Auto Center, LLC
Barbara A. Crabb
G. Michael & Sharon D. Craig
Coy & Lucy Crawford
Crayola Experience
Creative Landscapes
Creative Services Team at Penn
State University
Raymond & Julie Crissman
Bill & Joan Crist
Criswell Acres
Freeman L. Cromis Jr.
Peggy L. Cromley
Ralph W. Cromley
Robert B. Cross
Mr. & Mrs. Terrence Crouthamel
Charles Z. Culleton
Daniel J. Culpepper
CUMC Women's Fellowship
Morgan L. Curtis
Noel K. Curtis
Alyssa & Gabor Czivisz
Richard E. Dagle
Jack & Carol Dale
Zana M. Dalessandro
Elizabeth H. Dauberman*
Francis & Patricia Dauberman
John & Wendy Dauberman
Dauntless Hook & Ladder Co.
Elizabeth I. Davailus
Kathy J. Davies
Preston L. Davis
Vina A. Davis
Thomas & Thelma Day
Darwin F. Deamer
David & Audrey Deckard
Mr. & Mrs. Daniel Decker
Craig & Jessica DeFazio
Miriam M. Deibler
Mary Deihl
Calvin E. Deitrick
Robert & Jean Deitrick
Mrs. Mary Ann DePietro
Phillip M. DeRose
Catherine A. Derr
Charlene W. Derr
Jean Derr
Thomas L. Derrah
Robert & Debra Demuth-Lonce &
Family

Rodney & Susie DeWald
Glenwood J. Dewire Jr.
Ms. Cynthia A. DiAscro
Shirley Dickinson & Family
Dick's Sporting Goods
Dale & Sharon Diehl
Shirley S. Diehl
Janet R. Dierks
Lester & Ardis Diller
Andrea L. Dillman
Lewis D. Dinger
Charles & Susan Dinsmore
Mark & Kimberly DiRocco
Angelo & Rose E. Distefano
Ann & Tom DiStefano
Ronald & Minerva Dittmer
Kathy A. Dlabik
Donald Dobbs
Judith E. Dodgen
Dominick T. Adamo Funeral Home
Domino's Pizza
Richard & Helen Donahoe
Mary Martha Donahue
Michael & Phyllis Donegan
Raymond A. Dorley
Catharine A. Doyle
Darryl & Donna Dreese
Debra L. Dressler
Bud & Margaret Drick & Family
Sarah J. Dries
Peggy A. Drum
Torrey L. Drum
Albert & Duranne Drumheller
Paul & Linda Dubendorf
Josephine & Roland Duke
Mary O. Dunkerly
Margaret T. Dunkin
Christopher J. Dunlap
Gale S. Duque
Robert & Doreen Durgg
Ronald & Lisa Durgg & Family
Flora L. DuRussell
Robert J. Dutcavich
Dwellings
Kathryn Dzikowski
Matthew R. Eager
Gary & Pat Earnest
East End Auto Sales
Donna M. & Michael Ebersole
Rev. Jean L. Eckrod
Mr. & Mrs. Alan E. Edmiston
Walter & Judith Edwards
Jay & Mary Ellen Egli
Linda S. Eichenlaub
Cordelia Elias
Elite Nail Salon
Brian & Rebecca Elsasser

BUSINESS LEADERSHIP CIRCLE FISCAL YEAR 2017

Premier Leaders



Distinguished Leaders



Business Leaders

Anonymous

Blaise Alexander Ford, Inc.

COLDWELL BANKER Penn One Real Estate, Inc.

Geisinger Health Plan

Jersey Mike's Subs

Lamar Advertising

McNees Wallace & Nurick

Members Choice Financial Credit Union

Office Depot/Office Max

Silvertip, Inc.

Swineford National Bank

Watsonstown Brick Company

Weis Markets, Inc.

West Milton State Bank

Carl A. Emery
 Mrs. Carol C. Engle
 Jacob & Zona Engle
 Jay & Julia Engle
 Jeffry & Debra Engle
 Donzella & Larry Engleman
 Mr. Donald R. Erdley
 Mrs. Laura A. Erdley
 Sarah E. Erdman
 Charles & Lisa Erickson
 Tim & Kim Eshelman
 ESI Employee Assistance Group
 Ashleigh W. Espinosa
 Gareck J. Esposito
 Robert W. Donehower*
 Mrs. Frances L. Ettinger
 Marlene R. Ettinger
 Evangelical Community Hospital
 Emergency Department
 Evangelical Community Hospital
 Gift Shop
 Evangelical Community Hospital
 Nurses' Week Committee
 Evangelical Community Hospital
 Plant Engineering
 Evangelical Community Hospital
 Rehabilitation Services
 Evangelical Patient Access
 Sandra Evans & Sarah Eveland
 Mark & Becky Eveleth
 Nancy & Walter Everett
 Paul & Barbara Ezdebski
 Barry L. Fahnstock
 Fairchild Brothers, Inc.
 Paul D. Farber

Janice Fasano
 Mr. & Mrs. David Faust
 Timothy & Tammy Faust
 Rick & Patti Faux
 George A. Fecker
 Quentin & Virginia Feitner
 Oscar & Ellen Felme
 Ted & Judy Fetter
 Jordan W. Fetzer
 Ronald Fetzer
 Ficks Hardware
 Jason G. Ficks
 Lori A. Ficks
 Eleanor P. Finan
 Richard P. Findlay
 Fine Touch Builders
 First Baptist Church of Lewisburg
 Alvin Fisher Jr.
 Christine Fisher
 Frederick L. Fisher
 Helen B. Fisher
 Janice, Heather, & Brandon Fisher
 Tom & Suzanne Fitzgerald
 Mr. Harold U. Flanders
 Owen Floody
 Jean Flournoy
 Paul & Jill Fodness
 Michael D. Fohringer
 Corinne S. Foltz
 Midge Foltzer
 Lori Foor
 Ruth A. Forbes
 William & Janet Foresman
 Timothy Forneris
 Mary Anne Forry

Patrick & Leslie Forsburg
 Theresa J. Fox
 Vaughn M. Foxwell Jr.
 Mary K. Franceschini
 Mr. & Mrs. George Frank
 Henry W. Frew
 Colleen Fritz
 Leire & Katherine Fry
 Emily Fuller
 William & Lola Fuller
 Kathleen A. Funk
 Matthew & Heather Funk
 William & Patricia Furman
 Edward Gailor
 Jack L. Galer
 Dawn H. Gallagher
 Gallery 358...David Cooney
 Photography
 Kenneth & Nancy Galliher
 John & Marge Gardner
 Garfield's Restaurant & Pub
 James & Patricia Garvin
 Daniel & Mary Gasdick
 William & Martha Gaskin
 Carolyn M. Gatty
 Mr. & Mrs. Shaun T. Gaul
 Emma L. Gearhart
 Nancy Gearhart
 Mr. & Mrs. Harold A. Gehrer
 Donald & Esther Geigley
 Kelly M. Geise
 Gayle L. Geist
 Ann W. Gelnett
 Lonnie E. Gelnett
 Debra D. Gemberling

ANNUAL GIVING FUND FISCAL YEARS 2013-2017



Michael & Donna Gemberling
Dana L. Genco
William & Patricia George
Susan Gerlinski
Connie K. Germini
Emma J. Gessner
James & Christine Gessner
Ruth M. Gessner
Jody & Lauren Giannone
Eben & Beverly Gibbs
R. Frederick & Sandra Gilbert
Richard & Patricia Gill
Francis & Debra Gillott
Mr. Richard Gilroy
Ted & Cindy Gingrich
Marie & Larry Ginsburg
Mrs. Martha A. Girvin
Laura Glace
Betty M. Glasgow
Jim Gleason
GNO Girls - Wendy, Michelle,
Tracy, & Carol
Eleanor P. & Pastor James H. Gold
Brady & Barbara Golder
Albert & Kay Golfieri
Carl R. Good
Teresa & Linford Good
William & Shirley Good
David & Linda Goodhart
GoodShop
Dr. & Mrs. Daniel S. Gordon
Phyllis A. Goss
Betty J. Gotshall
Susan B. Gottschall
Rusty, Karen, & Sarah Graber
Grace Reformed Church of Troxelville
Carol & Bruce Graham
Nick Graham & Tim Kieffer
Roy G. Graham
Julie Granados
Keith & Sylvia Graver
Ryan & Laura Graver
Larry W. Gray Sr.
Norma L. Gray
Doug & Leona Graybill
Mr.* & Mrs. Hubert P. Graybill
Jane S. Graybill
Greek Isles Salon
Howdy & Heather Greely
Bill & Ruth Green
Sharon R. Green
Elizabeth A. Greenaway
Gerald & Ruth Greenly
Ilsa A. Grieser
Franklin & Mary Beth Griffith
David & Lestia Grill
Josh & Jessica Grill

Wilfred & Becky Groce
Thomas R. Groninger
Teresa & Fred Groover
Elmer* & Shirley Grose
Marie D. Gross
Evelyn M. Grove
Penny & Daniel Guzanski
Diane & Jesse Hackenberg
Dr. & Mrs. Gary A. Hackenberg
Mr. Jack C. Hackenberg
Marion A. Hackenberg
Mr. & Mrs. Willis E. Hackenberg
Diane E. Hackenburg
Chuck & Becky Hagenbaugh
Mary A. Hague
Mr. Michael J. Haile
George P. & Velma C. Haines
Clement & Karen Haley
Carl E. Hall
Jim & Judi (Bitner) Handel
Tom & Avis Hans
Gloria A. Hans & Romayne Swisher
Robert* & Christena Harder
Jacqueline J. Harmon
James L. Harmon*
Pam & Jeff Harpster
Rev. & Mrs. Harry H. Harter
David & Sandra Hartman
Jean A. Hartman
James W. Hartzel
Iris Haseloff
Richard & Susan Hassenplug
Evelyn J. Hassinger
Kathy & Dale Hassinger
Samuel & Roberta Haupt
Barbara A. Hause
Frances Haviland
Florence J. Hayes
Albert D. Heebner
Eleanor J. Heimbach
Marvin Heimbach
Thomas & Terri Heimbach
James & Eleanor Heintzelman
Joseph Heintzelman
Carl B. Heisey
James & Clara Hemrick
Mrs. Nancy L. Hendricks
Thomas & Esther Henninger
David C. Henry
Ed Henry
Jean L. Henry
Jo A. Henry
Randy & Theresa Henry
Jerry & Maria Hensel
Delores D. Henson
Roger & June Hepner
Betty K. Herald

Joseph & Kathleen Herb
David & Brenda Herbert
Janice L. Herbst
James P. Herbster
Brandon & Brianna Herman
Clyde R. Herman Jr.
James L. Herron
Thomas & Christine Herron
Chad & Sarah Hershberger
Morton & Evelyn Hershman
Bill & Tina Hertz
Glenn & Sue Hertzler
Virginia B. Hertzog
Robert W. Hess
Donald & Pearl Hetrick
Connie M. Heyman*
Lenora M. Heywood
Susan J. Hickman
Dolores F. Hightower
Jackson & Martha Hill
William U. Hill
Sharon L. Hixson
Robert O. Hobbes
Michael & Bonita Hoch
Alice R. Hoffman
Barry E. Hoffman
Bruce & Carol Hoffman
Cory A. Hoffman
Eugene F. Hoffman
James S. Hoffman
Mrs. Mary Ellen Hoffman
Richard & Nancy Hoffman
Shirley Hoffman
Mark & Joan Hofmann
Mike & Kathleen Hofmann
Jeffrey & Sheri Hoke
Mr. & Mrs. Ken Holdren
Deanna L. Hollenbach
Dorothy M. Hollenbach
Mr. Paul E. Hollenbach
Ray M. Hollenbach
Tricia A. Hollenbach
Stephanie Hollick
Mr. & Mrs. David M. Holmes
Hometown Eatery
Merrill S. Hood
Jane Hoover
John & Margaret Hoover
Larry G. Hornberger
Kenneth & Elnora Horst
The Hotel Hershey
William R. Houdeshel
Glen & Kathryn Houpt
John H. Houseknecht
Ms. Karen Y. Houser
William & Linda Houser
Mrs. Betty J. Houtz



Don Remmey stands with stacks of pallets at his company in Beaver Springs.

Passion for the People

Taking Healthcare on the Go

For Don Remme, supporting Evangelical Community Hospital is an extension of the kindness and care he offers to his employees on a daily basis.

In 1990, the then suburban Philadelphia resident purchased a small pallet company in Beaver Springs from a member of the Plain community. The 17 employees were also members of the Plain community. As Don became more familiar with his employees, he recognized the importance of respecting their culture. That meant accepting the nuances of Amish holidays and traditions.

One of those nuances was the way they approach their health. Don explains that the Plain community does not have health insurance and in most cases, will wait until they are ill before seeking medical attention. And once sought, they were willing to travel long distances—to Ohio, Indiana, even Mexico—to get care, thinking that healthcare locally was unaffordable.

“I could see the great resource Evangelical is as a true community hospital, and through conversations with Kendra (President and CEO), I knew there was an honest commitment by the Hospital to serve the Plain community,” said Don.

In addition to designating a liaison with the Plain community to explain the services and care available to them, Evangelical proposed the idea of a mobile medical unit. The mobile medical unit, a converted RV with examination rooms, would bring routine medical services such as screenings, immunizations, primary healthcare, laboratory services, and more directly to communities throughout the Hospital’s service areas.

“I knew this was something I wanted to support. The idea of making preventive medicine available where my employees work and live was a project I could support,” said Don. “My donation to that cause was not just for the mobile medical unit but for the health of my employees and the health of all other community members. In addition to my Plain community employees, I’ve learned that my English employees frequently only deal with health when there’s a problem, ignoring preventive care.”

The community and his investment are even more of a priority now, since he and his family made Lewisburg their home about 10 years ago.

As Don’s pallet business has grown over the years, many of his 70 employees are second generation. As time goes on, Don believes more and more in the power of community medicine and the benefit of having a strong community hospital.

“I will continue to give to and support Evangelical. It’s important to have a hospital that works to truly understand the needs of the people it serves and then creates ways for them to have access to care.”

—Don Remme, Remmey Pallet Company

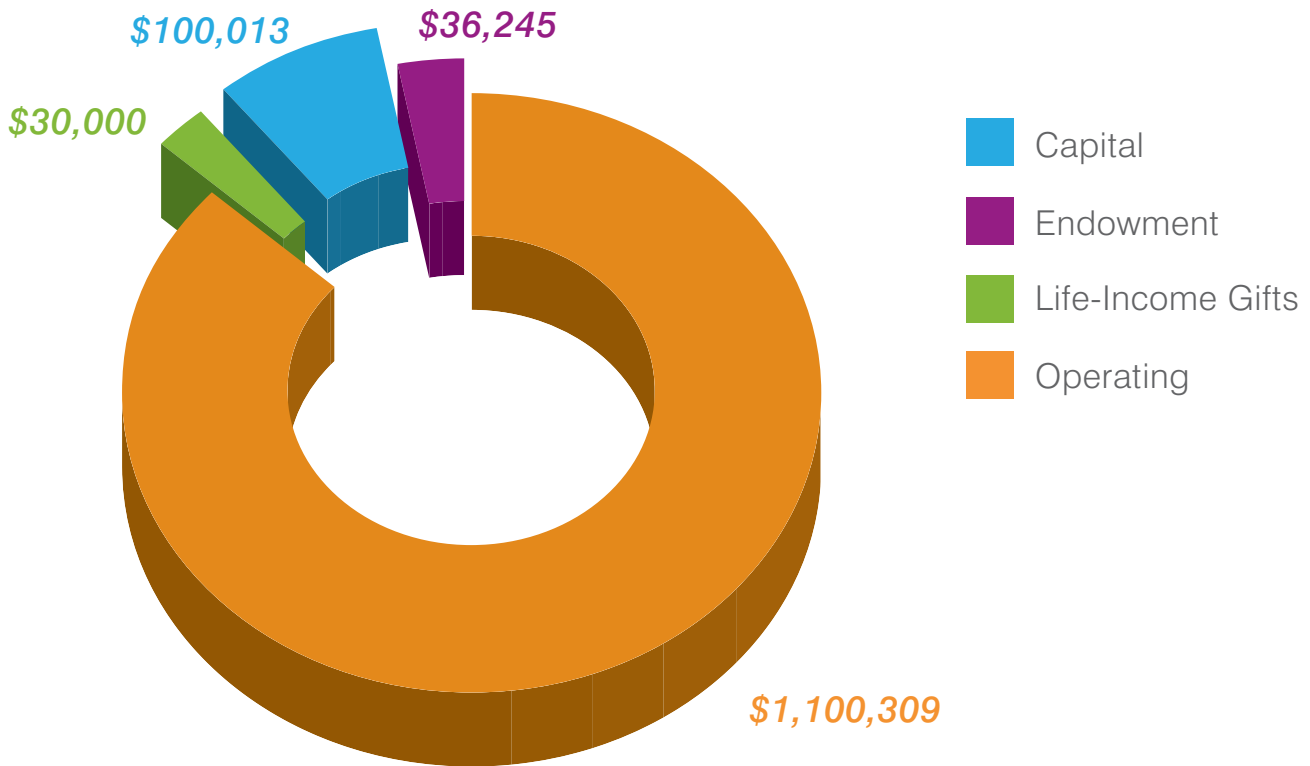
This is just one story of many ways that a gift can make a difference. If you’re interested in joining the ranks of Evangelical’s passionate donors, call the Development Office at 570-522-2685 or visit www.evanhospital.com.

Bill & Linda Houtz
Carol L. Houtz
Thelma Houtz
Karen & Douglas Hovey
Dorothy R. Hower
Blendine E. Howerter
Brenda L. Hubbert
John Huckaby
Gene Hudelson
Catherine A. Hudock
Charlotte A. Huff
Mr. & Mrs. Ronald E. Huff
M. Lois Huffines
Steven J. Hufnagle
David L. Huling
J. Eric & Gwen Hull
Jeffrey & Cathy Hummel
Leona A. Hummel
David Humphrey
Tom & Karen Humphrey
Warren C. Humphrey
Wendell & Carol Hunt
David & Lois Hunter
Norma J. Hunter
Sharon S. Hunter
Sonny & Almaretta Hupp
Margaret (Peggy) Hursh*
Alvin & Rose Huyard
Robert Hynick
Harvey & Brenda Ilgen
Kathleen L. Imgrund
Donovan Inch
Judy A. Inns
Ira Middleswarth & Son, Inc.
Michael & Veronica Irvine
Stephen E. Irwin
Isabella Restaurant & Cocktail Lounge
LeRoy & Florence Ishler
J&M Pallet Company
Mrs. Carl W. Jaegers
James S. Armstrong Associates
Susan D. Jamison
Mary Ellen Jansen
Joan S. Janusz
Nancy Jarrett
Nicole Jarrett
George & Zoya Jenks
Mr. Pierre Joanis
Rev. & Mrs. James E. Johnson
Lawrence Johnson
Robert & Jeanne Jolly
Charlie & Ginny* Jones
Mae N. Jones
Brad & Sally Jordan
Timothy A. Jordan
Joseph Carroll Salon
John & Heidi Noll Joseph

K & S Music Center LLC
R. Michael Kaar
Mary C. Kahl
Micki & Molly Kahler
Linda & Mark Kardohely
Sabra L. Karr
Mary E. Kaufman
Kay Jewelers
Amy C. Keefer
Erlyn R. & C. Mary Keefer
Matthew & Angela Keefer
The Keenan Family
Marilyn Keiser
Francis H. Keister
Fred & Rachel Keister
Kenneth & Eva Keister
Randy & Jody Keister
Richard & Dawn Keister
Mr. & Mrs. Ronald Keister
Stanley F. Keister
Ruth I. Keister
P. Joseph Keller
Fred & Donnell Kelly
Roger & Mary Kennedy
Barry & Betty Kerstetter
Gladys E. Kerstetter
Paige Kerstetter
Ms. Cindy K. Kessel
Frederick & Virginia Kessler
Patricia & Kenneth Kessler
Ben & Daria Keyser
Carl J. Kijowski
Patches M. Kilgus
Jonathan King
Cliff & Sara Kinney
Thomas & Judy Kishbaugh
Kiwanis Club of Lewisburg
Kiwanis Club of Mifflinburg
Kiwanis Club of Milton
Grant M. Kleppinger
Craig & Veronica Klesh
Elaine E. Kline
Kenneth H. Kline
Nancy E. Kline
Ronald & Ellen Kline
Steven J. Kline
Donna S. Kling
Bonita J. Klinger
Andrea Klingler
John S. Klingler
Richard & Carolyn Klingler
Timothy & Marie Klose
Sylvia K. Knauer
Mariann C. Kneiss
Ruby J. Knerr
Charles & Karin Knisely
Timothy & Linda Kniss

Harry R. Knouse
Winifred M. Knouse
Linda Kobeck
Edna V. Kobre
Michael & Sally Kobus
Mrs. Charlotte L. Koch
James F. & Phyllis M. Kohl
Kermit & Arlene Kohl
Daniel & Gladys Kolb
George & Dustine Koons
Joy A. Koskey
James & Susan Kraft
Dr. Steven R. Kramm &
Dr. Colleen Flaherty
Bobbie D. Kratzer
Carol E. Kratzer
Donna Kratzer
Mary Lou Kratzer
Richard H. & Betty J. Kratzer
Charlie & Donna Krebs
Vicki Krebs
Mrs. Esther Kreider
Jean C. Kreighbaum
John W. Kreighbaum
Michael & Grace Kreiner
Kelly-Ann Kreisher
Carl P. Krempasky
Frank & Sally Kruel
Kim G. Kuba
Ashley Kuenzie
Kristy Kuhn
Carol J. Kuhns
Ronald J. Kuhns
Harlan & Shirley Kurtz
Andy & Holly Kyle
Dave & Julie Kyle
Shirley A. LaForme
Francis & Karen Lagerman
William & Mary Lahner
Angela K. Lahr
Lisa J. Laidacker
Ronnie & Diane Laidacker
Leona M. Lair
Mrs. Janet H. Laird
Lake Tobias Wildlife Park
Mr. George S. Lakis
Robert & Carol Lamparter
Betty R. Landis
Landis Pastured Poultry
Marcia M. Landrum
Bill & Terrie Lane
Thomas & Priscilla Lanks
Ken & Leone Latshaw
Mary K. Laudenslager
Sally A. Lauer
Dorothy T. Lauver
Bill & Charlotte Laverty

GIVING BY DESTINATION FISCAL YEAR 2017

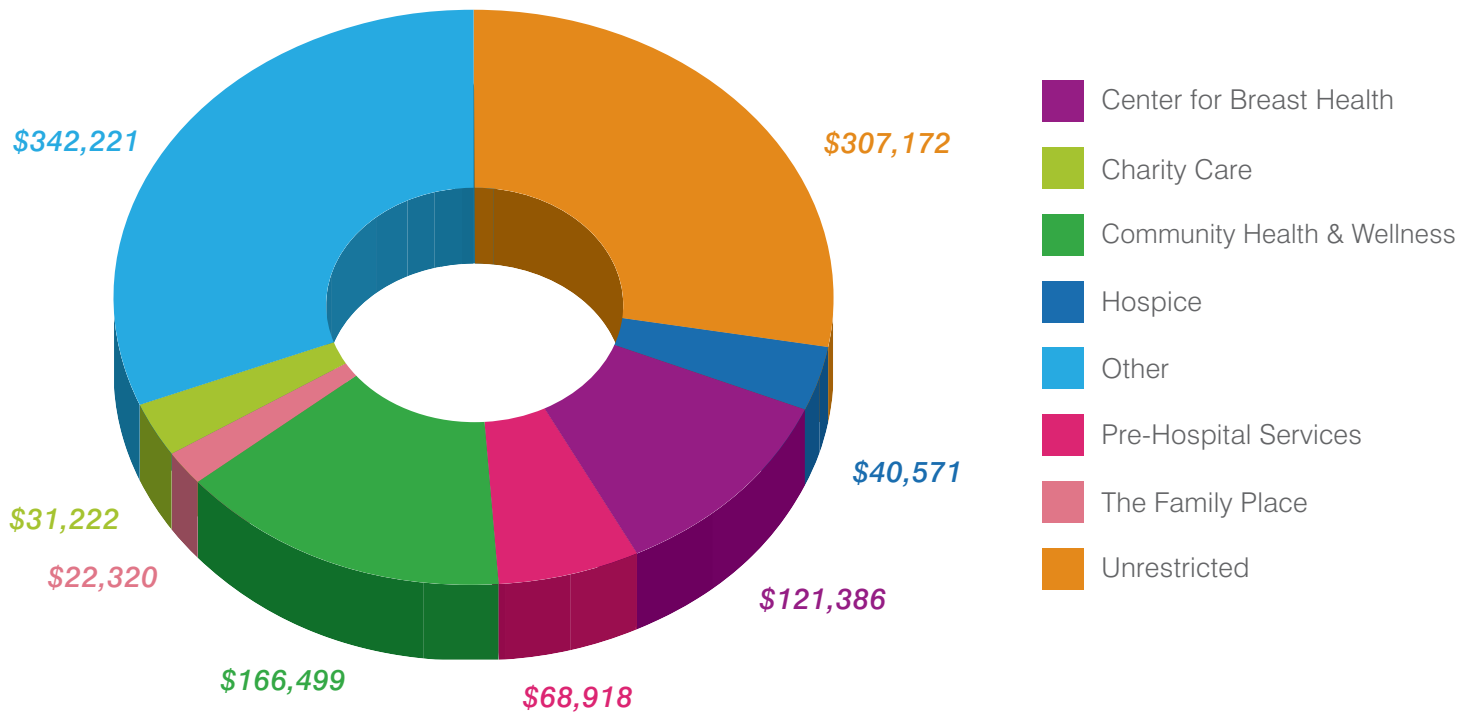


David & Bonnie Lawrence
 Harold & Jeanne Lawrence
 Harriet Lawrence
 Marilyn M. Lawson*
 Le Jeune Chef School of Hospitality at Penn College
 Leakas Quality Foods, Inc. - Wendy's
 Mona M. Lebbano
 Paul N. Leffler
 Marcus M. Lehman
 Elizabeth J. Leitzel
 Harry E. Leitzel
 Randal J. Leitzel
 Georgia M. Lenig
 Ms. Sandra M. Lenig
 Erman E. & Evelyn L. Lepley
 Dawn M. Leshner
 Scott C. Letterman
 Dawn F. Lewis
 Lewisburg Borough Council, Mayor, Manager, & Solicitor
 Lewisburg Young Farmers Association
 Nancy W. Libbey
 Stephen J. Lindenmuth
 Joe & Ann Lingenfelter
 Lloyd & Carol Livingston

Dena K. Long
 Genevieve J. Long
 Henry W. Longenberger
 Ada Longenecker
 LongHorn Steakhouse
 Katarina Lopez
 Virginia Lord
 Libby R. Loss
 Patsy R. Loss
 Ms. Alberta M. Love
 Faith A. Love
 Marcella M. Lowrey
 Deborah A. Lucas
 Robert & Gladys Luckenbaugh
 Anthony B. Ludovico
 George W. Lupold
 Andrew & Susan Lyons
 JoAnne K. Lyons
 Susan K. Lyons
 Evelyn M. Mabus
 Keith R. Mabus
 Marie M. Macaluso
 Allen W. Madara
 Ronald & Carole Madle
 Magellan Rx
 Ms. Phyllis Mahalski

Paul Mahoney
 Rev. & Mrs. A. Donald Main
 John A. Malcolm Jr., MD
 Bill Maloney
 Mancini's Italian Restaurant
 Kenneth & Molly Maneval
 Martin & Sheryl Marcinko
 Ms. Doris S. Marino
 Dr. & Mrs. Patsy J. Marra
 Alfred L. Martin
 Mr. & Mrs. Benjamin H. Martin
 Gregory & Kathy Martin
 Jack T. Martin, MD
 Lewis L. Martin
 Luke & Anna Martin
 Mr. & Mrs. Michael Martin
 Renee E. Martin
 Dr. & Mrs. Robert F. Martin
 Marzoni's Brick Oven & Brewing Company
 Tansa G. Massoud & Erica Shames
 Patricia E. Master
 Ted & Jackie Matlow
 Paul & Pamela Mauger
 Carole J. Maurer
 Scott & Gloria Maust

GIFTS TO SUPPORT OPERATIONS FISCAL YEAR 2017



Donald & Connie May
 Franklin & Phyllis McCloud
 Shawn & Dee McConnel
 MaryAnn & Tim McConnell
 Daniel & Gloria McDavitt
 Maria McDermott
 Wayne & Serena McGraw
 Paul & Suzanne McGuire
 James A. McKinney
 John J. McMann
 Krista & Mike McNally
 David & Marie McNamara
 Romaine K. McPherson
 Mr. & Mrs. Paul J. McShane
 Carol Meckley
 Mr. & Mrs. W. Thomas Mecouch
 Medical Park Ear, Nose & Throat
 Dolly Meiser
 Robert & Annette Mellman
 Joyce Mensch
 Scott E. Mensch
 Richard D. Merena
 Mary K. Mertz*
 Donald M. Messimer Jr.
 Barbara J. Messina
 Thomas E. Messenger
 Barbara L. Metzger
 Glenn & Kathleen Meyer

Eric G. Michael
 Raymond E. Middleswarth
 Ruth E. Middleswarth
 Abigail Middleton
 Mifflinburg Auto Sales, Inc.
 Mifflinburg Young Farmers Association
 Beth & Matthew Miller
 David & Susan Miller
 George C. Miller II, MD
 Harry R. Miller
 John & Debbie Miller
 John & Lynn Miller
 Sandra M. Miller
 Thomas & Carol Miller
 Tom & Ann Miller
 Douglas & Jill Mills
 Marcia L. Milne
 Milton High School Class of '59
 George Minard
 Audrey Mincemoyer
 Betty Jane Mincemoyer
 L. L. Minium
 Amy Minnier
 Maria Miosi
 Mr. & Mrs. Darvin L. Mitchell
 Jerry R. Mitchell
 Kenneth & Debra Mitstifer
 Craig E. Mitterling

Mohegan Sun Arena at Casey Plaza
 Monday Night Ladies Bowling League
 Mrs. Alma A. Moody-Long &
 Mr. George Long
 Mr. & Mrs. Ernest E. Mook
 Earle J. Moore
 Nancy B. Moore
 Audrey Moree & Janice Moree
 Irene Morgan
 Dr. & Mrs. James W. Morgan
 Rusty & Carole Morgan
 Cindy Morningstar
 Helen C. Morrell
 Kathryn Morris
 Laurisa G. Morris
 William & Linda Morrissey
 Derrick & Krista Moser
 John P. Motichak
 Mount Nittany Vineyard & Winery
 Barbara MacMillan Mouw &
 Andrew P. Mouw
 Barbara A. Moyer
 Donald & Dawn Moyer
 Duane E. & Kristin L. Moyer
 Gene & Shirley* Moyer
 Harry & Jane Moyer
 Muddy Run Transport
 Ms. Beth A. Mull

Brian K. Mull
Leona G. Mull
Thomas & Carolyn Mull
The Mullin Family
Greg & Michelle Munster
Robert & Anne Murcek
Maureen M. Murphy
Dale & Alice Murray
Mrs. Irene Musser
Shirley F. Musser
Mr. & Mrs. John Mutschler
Albert & Alice Nacinovich
Charles & Linda Neff
Neighbors of Galen Ettinger
Jodi L. Neitz
Lydia K. Neitz
Palmer & Betsy Neitz
Julila A. Nerhood
Jeffrey L. Netherton
New Hope Bible Church, Inc.
Next Level Strong
Edwin D. Ney
Wally V. Nguyen
Helen B. Nickelsen
Mary K. Nipple
Jay & Rose Nissley
Maurice & Joyce Nissley
Howard M. Noaker
Melissa Noble
Ralph & Jean Noble
Joseph Noll & Linda Boop-Noll
Kathleen & Kenneth Noll
Kenneth & Kathryn Noll
Kenneth & Sonja Noll
Lydia Nolt
Jeffrey D. Nolter
Tamara S. Normington
Deborah & Charles North IV
Northumberland CAO Employees
Carol Oberlin
Marlin R. Oberlin
Bill & Mary Lou O'Brien
June E. Ocker
Evelyn L. O'Connell
Marjory C. Ohl
Michael & Gail O'Keefe
Colleen Olaf
On Fire Promotions
Toby & Cheri Orndorf
Dale & Jo Orris
Loyce J. Osgood
Phoebe N. Oshirak
Outer Image Salon
Mrs. Dorothy M. Oxenrider
PA Cystic Fibrosis, Inc.
Charles C. Pagana, MD
Nichole & Stanley Pakoskey

Panera Bread
Gavin T. Pardoe
Pardoe's Perky Peanuts
Alyssa Park
Byron & Gloria Patterson
Dolores J. Patton
Dean & Elizabeth Ann Paul
Hope E. Paul
William & Joyce Paul
Brian & Patti Paulhamus
Jay & Trudy Payne
C. David & Carol Ann Peachey
Judy & John Peeler
Kieran & Melissa Pelletier
Cynthia & Garry Pepple
Ms. Pamela F. Perna
Brooke Persing
Dr. John & Melodee Persing
Donald & Angela Peterman
Aron G. Peters
Raymond & Joan Peterson
Gary & Sandra Pfleegor
Kim T. Pham
Roger & Loris Pheasant
The Philadelphia Phillies
William & Candi Pick
The Pine Barn Inn
Pittsburgh Steelers
Community Relations
Jaye & Larry Platt
Paul & Nancy Platt
Platte View Ranch, Inc.
H. Wynn Pletcher
Pocono Raceway
James M. Pollard
Michael & Andrea Popp
Ms. Jeanne Potratz
Jeanette A. Powell
Sandra L. Pratt
Chester & Ellen Pribble
Roy B. Price
Bill & Sue Prowant
Terry & Luanne Prowant
Purity Candy
The Purple Platypus
J. Daniel Pursel
Larry & Roberta Putterman
Quality Inn
Rita K. Quinlan*
Linda G. Quodomine, DVM
R. R. Donnelley
Laverne L. Radel
Radiology Residents at Geisinger
Medical Center
Mary K. Rainey
Merle & Janet Rakerd
Jay & Anna Ramer

Craig & Cathy Ranck
Ileen Ranck
Janet M. Ranck
Steven & Kim Ranck
Richard & Barbara Rapson
Helen D. Raski
Freeman & Dottie Rathfon
Connie & Steven Ravert
Roberta & John Ravert Sr.
Rebecca A. Ray
Raymond James
Jean W. Re
Marshall Rea
Kenneth & Dianah Reamer
Mary L. Rearick
Bob & Shirley Reber
Harold & Betty Reber
Oren & Pam Reber
David & Julia Redcay
Dennis & Janet Reed
Mr. & Mrs. Isaac R. Reed II
Tom & Shirley Reed
Warren & Judy Reed
Dwayne Reeder
Shawn & Mary Beth Reeder
Jennifer Reese
L. Jean Reese
Refreshing Mountain Retreat and
Adventure Center
Susan & Paul* Reich
Mr. & Mrs. K. Barton Reichard Jr.
Shirley J. Reichner
Dr. & Mrs. John S. Reidell
Reiff's Poultry- Eli & Kathleen Reiff
Robert E. Reigle
Tom & Peggy Reimensnyder
Dale L. Rein*
Steven Reinaker
Anna M. Reitz
Todd L. Remington
Courtney Remmey
Elizabeth R. Remsnyder
Harry & Kandi Renn
Judy L. Renno
Edith E. Ressler
Allen & Carol Reynolds
Ardella M. Rheam
Rich Coast Coffee
Frederick & Beverly Rich
Tom & Mary Lou Rich
Carol L. Richard
William C. Richard
Barbara A. Ricker
Gerald & Betty Rickert
Herbert F. Rickert
Mr. Paul C. Rinck
Scott Rine

Frederick & Lois Ripka
Arlin & Rebecca Rishel
Barry & Laura Rishel
Judy & Only Rishel
Kenneth & Rhelda Rishel
Craig E. Ritter
Louise Ritter
Vickie M. Ritter
Frank E. Roadarmel
Andra M. Robbins
Franklin & Fujiko Robbins
Glen A. Robbins Jr.
Toru Yakura & June Robbins
Zarina Robbins
Margaret Rochlitz
Douglas & Debbie (Morgan) Rodis
John & Mary Rolinc
Cynthia A. Romania
George & Sandra Rompella
Ronnies Rentals LLC
Professor & Mrs. Charles A. Root
Pat Rosboschil
The Rose Group
Scott & Courtney Rosevear
Nelle Rote
Kara Rothermel
Rue S. & Bonnie L. Rothermel
Roupp Funeral Home, Inc.
Fred & Hazel Roush
Glen & Marian Roush
Joy G. Roush
Nancy M. Rovenolt
Darlene M. Rowe & Robert Varney
David Rowe
Helen I. Rowe
Suzan Ruch
Charles H. Ruckle
Raven W. Rudnitsky
George T. Rudy
Rug Outlet, Inc.
Charles & Jane Ruhl
H. Kenneth Ruhl
Velma Ruhl
William J. Rumberger
Reuben L. Ruppert
Donald & Mary Lou Russell
John & Shirley Russell
Linda K. Russell
Mary Russin, MD
Margaret R. Ryan
Priscilla T. Ryan
Robert & Elizabeth Sabol
Elizabeth Sampsell
Wayne & Patricia Samuelson
Dennis B. Sanner
Betty J. Santangelo
Jerome M. Sassani

Linda M. Satteson
Bob & Jean Sauers
Bob & Elaine Sautner
Mr. & Mrs. Larry Savidge
Charlotte Sawyer
Richard A. Saylor
Mr. William C. Saylor
Rhonda Schack, Sonja & Alex & Brenda
Karl & Dorothea Schaefer
Friedrich & Jacquelyn Schaeffer
George & Rebecca* Schell
Schindler's Studio
Mr. & Mrs. Kenneth E. Schlegel
Margery M. Schlegel
Nettie Schlegel
Joseph & Loretta Schmadel
Luke Schmick
Eric & Barbara Schmidt
Mary E. Schmoyer
Larry Lawson & Barbara Schnure
David Schoepf & Judith Harris
Jillian Schooley
Esther Schreffler
Karen E. Schuler
Deb Schultz
Norma R. Schutter
Alice Anne Schwab & Bob Garrett
John & Melody Schwab
Susan & Fred Schwartz
Mr. & Mrs. Greg Scott & Family
William J. Scott
Sea Colony East Phase VII
Joan I. Seachrist
Edith B. Seaton
James & Cecilia Seay
Gregory & Nancy Seebold
Catherine & Juergen Seefeldt
Larry A. & Janice M. Seibert
James & Ruth Seksinsky
Selinsgrove Dental Arts
Melody Sell
Michael & Beth Sellman
Kathryn T. Shade
Diane M. Shadel
Cynthia & Dennis Shaffer
Debra A. Shaffer
Gayle D. Shaffer
Richard L. Shaffer Sr.
Richard & Lena M. Shannon
Ms. Dianne S. Sheaffer
Glen & Leatha Sheaffer
John & Glenda Sheaffer
Joyce M. Shearer
Isabelle Sheedy
John R. Sheesley
Dale & Lou Ann Sheets
Robert & Sandra Sheetz

Donald & Kathleen Shemory
Steven C. Shields
Grace L. Shipe
Cathi Shirk
Ernest & June Shirk
Ruth J. Shirk
Stanley & Ladonna Shirk
Annette & Hilda Shively
Deane & Jeanne Shively
Rosalie M. Shoemaker
Marlene Y. Sholley
Sandra K. Sholley
Harold & Nancy Shook
Elwood & Leatha Showalter
Park E. Shrawder
Lori J. Shuey
The Shultz Family
John P. & Susan M. Sidler
M. Carol Sieminski
Sight & Sound Theatres
Matthew & Sharon Silberman
Silver Moon Fitness
Ruth (Ann) A. Simmons*
Fred & Debbie Simon
Anne C. Simpson
Terry & Carol Skarupsky
Nancy S. Slease
Ellen M. Sloss
David & Donnis Smeltz
Cas & Dolly Smerroskie
Smiling Chameleon Draft House
Gary G. Smith & Sandra Vonada
Harry J. Smith
Mr. & Mrs. James R. Smith
Jane & John Smith
Kenneth & Patricia Smith
Lamont & Cynthia Smith
Marguerite & Jim Smith
Marilyn Berger Smith
Rachel V. Smith
William H. & Carol Smith
Ethel A. Snook
Larry & Carol Snook
Linda A. Snook
Richard & Mary Snook
Alice M. Snyder
Benny & Holly Snyder
Charles & Nancy Snyder
Dale & Bonnie Snyder
Danee K. Snyder
Daniel & Debbie Snyder
David K. Snyder
Don & Evie Snyder
Donald & Janice Snyder
Mr. & Mrs. Gary S. Snyder
Irvin & Carolyn Snyder
Kenneth & Beverly Snyder

Libby Snyder
Linda P. Snyder
Mary E. Snyder
Paul S. Snyder
George Somis
Pamela J. Souders
Margaret & William* Sowers
Lee & Elizabeth Spangler
Mike, Meredith, Heather, &
Ryan Spangler
Tammy Spangler
Esther B. Specht
Ronald H. & Specht
Bernice K. Speck
Ian & Vickie Speck
Dianna & Roger Spickler
Robert & Sheri Spickler
Emma J. Spinello
Gregory L. Spinello
Lawrence Splitt
Carol Spratt
Michael & Terry Spriggle
Fred Springman
James & Linda Sprouse
Ruth Ann Sprout
St. Thomas Independent Brethren in
Christ Church
Mr. & Mrs. Robert Stackhouse
William & Suzanne Stackhouse
Charles F. Stahl
Jacson D. Stahl
Wayne M. Stahl
Mrs. Terry L. Stahley
Jill D. Stahlnecker
Tom & Beckie Stahlnecker
Katherine E. Staller
Carolyn K. Stamm
Celia Stamm
Homer F. Stamm
Sue Ellen Stamm
Steve Stamos & Lucie Whitechurch
Donald A. Stanley*
Penny Starkey
State Farm Insurance
Arlene Stauffer
Debra A. Stauffer
Luther S. Stauffer
Kenneth & Nancy Steckel
Betty Steele
Stein's Flowers, Gifts & Greenhouses
Thomas & Alice Stelter
Stephen & Beverly
Betty M. Steppe
Sterling Middle School Physical
Education Department
G. B. Stewart
Charles & Shirley Stigerwalt

Wilmer & Sara Stoltzfoos
Logan & Janae Stoltzfus
Nancy H. Stoltzfus
Parke & Marcia Stoltzfus
Timothy & Linda Stoltzfus
Michael & Susan Stoudt
Steva L. Stowell Hardcastle
Elsie L. Straub
Straub Metal Employees
Dimity Strawser
Gloria G. Strong
Meda E. Struble
Mr. William F. Stuckey
Chris & Jennifer Sullivan
Jennifer D. Sullivan
Sunbury Motors
David & Susan Surgala
Susquehanna Button Club
Susquehanna Sprinklers, Inc.
Susquehanna Trailways
Susquehanna University
Susquehanna Valley Mall
Sandra Sutherland
Mary B. Suttles
Beatrice M. Swanger
Carol B. Swarner
Shirley M. Swartz
Swartz Ultimate (West)
Mr. Richard G. Swartzlander
Eleanor A. Sweeney
Patricia Sweeney
Brenda K. Swineford
Walter & Lois Swineford
Edna N. Swinehart
Margaret A. Swinehart
Michele A. Switzer
Donald L. Swope
Barbara R. Tamke
Tastecraft Market
Mr. & Mrs. Jessie E. Taylor
Tom & Candi Taylor
Joyce Telatovich
Janet Temple
Texas Roadhouse
Theresa Maurer's Beauty Salon
Barbara & Bob Thomas
Mr. & Mrs. Charles A. Thomas
Gary & Kathy Thomas
John E. Thomas
Sue Thomas
Pamela J. Thompson
Virginia L. Thomsen
Threading Love
Mabel E. Thursby*
Lois G. Tilton
Ronald & Janet Tomcavage
John & Susan Tonzetich

Top Shelf Meats & Seafood
TOPS PA 9306 Muncy
Alice Totten
Touchstone Memorials
Jo Ann Tracy
James H. Traendly
Susan L. Trate
Robert C. Trautwein
Susan K. Travis
Michael & Joyce Treas
Jason C. Treese
Trinity Oak Grove Lutheran Church
Ray & Linda Tritch
Lily M. Trivelpiece
Leroy & Barb Troester
Merlin R. Trojan
Mary J. Troup
R. U. Troutman & Sons, Inc.
Truck & Trailer Sales and Leasing Corp.
Margaret A. Tufts
Turbotville Area Lions Club
The Denise K. Turpack Family
Grace O. Tuttle
Betty P. Ulmer
Union County Housing Authority
United States Penitentiary
University Hair Design
University of West Georgia
Urban Post
Patricia R. Urosevich
Bryce & Yolanda Uytiepo
Betty A. Valentine
Cliff & Diane Valentine
Gail Valentine
Greg & Leslie Valentine
Kevin & Carol Valentine
Ms. Eleanor Tobias Valushin
Anna L. Vanatta
Glen & Florence VanDyke
Steve & Carol VanKirk
Robert & Jean Varano
Carol Vargas & Bruce Jackson
Ralph A. Varner
Joseph E. Veley Sr.
Joel W. Venturini
Edward J. Vilkauskas
Dudley & Helen Vincent
Robin C. Vonada
Theresa Waggoner
Beverly I. Wagner
Connie Irene Wagner
Judith T. Wagner
Lorraine P. Wagner
Richard E. & Nancy I. Wagner
Roy E. Wagner
Gene N. Walker
Nancy J. Walker

Mr.* & Mrs. Charles W. Walter
 Colby & Judy Walter
 Cynthia J. Walter
 Harold & Valores Walter
 Nancy B. Walter
 Nevin & Linda Walter
 Richard E. Walter
 Richard F. Walter
 Tyler & Deana Walter
 Nancy J. Walters
 Dr.* & Mrs. H. Richard Ward
 Carol A. Warfel
 Ronald A. Warfle
 Warrior Run Women's Club
 Wash Tubs Laundry & Linen Supply
 Bradley D. Watkins
 Gary J. Watts
 Monica & Dan Weatherly
 Cora I. Weaver
 Glen & Tina Weaver
 Jennifer & Matthew Weaver
 Julie A. Weaver
 Marie S. Weaver
 Jeanne L. Weber
 Wegmans
 Mary D. Wehr
 Fae M. Weible
 Bill, Anne, Lisa, & Gini Weigold
 Weis Center for the Performing Arts
 Weis Markets
 Michael & Lynnette Weisner
 Marie B. Welliver
 Russell F. Wells
 Chanin D. Wendling
 Kori F. Wenner
 Leroy C. Wenrick
 Betty C. Wentzler
 Robert G. Werba
 Bernita K. Wert
 Dorothy & Nevin Wert
 Roy & Esther Wert
 Anna Mary Wetzel
 Scott & Bonnie Wheeland
 Carolyn I. White
 Debra White & Family
 Richard C. White & Carolyn I. White
 Virginia Whitenight
 White's Cleaning Service
 WHWTCNO
 Ronald Wickwire
 Shirley S. Wilhelm
 Jane Wilkerson
 Marianne Wilkinson
 Christopher D. Williams
 Ruth J. Williams
 Williamsport Crosscutters
 Susan G. Wills

Annette Wilson
 Barclay M. Wilson, DO
 David & Joanne* Wilson
 Doris M. Wilson
 Joyce Wilson
 Dr. & Mrs. Theron Winter
 Rob Withee
 Sandra Witmer
 Linda Wittes
 Shirley H. Wittes
 William & Elaine Wolf
 Marcia T. Wolfe
 Rita J. Wolfe
 Ronald & Vivian Wolfe
 Otto & Eleanor Wolke
 Women of the Moose Chapter 1279
 Women of the Moose Chapter 2244
 Mr. & Mrs. Samuel A. Wood
 George & Ann Woodling
 Karen & Butch Woolsey
 Mrs. Ann C. Wright
 Wesley & Deborah Wrights
 Wynding Brook Pro Shop
 James & Rozalyn Yannaccone
 Mary J. Yarger
 Irina R. Yastremski
 Gloria E. Yerg
 Mr. John E. Yerger
 John H. Yingling
 Barbara A. Yocum
 Eileen A. Yocum
 Earl & Lois Yoder
 Israel & Elizabeth Yoder
 Carol E. Young
 L. Joanne Young
 Merlene M. Young
 James R. Younger
 Leroy & Christine Zalewski
 Edward & Mary Ann Zarkoski
 Nancy M. Zarr
 Betty L. Zechman
 Linda Zechman
 Stephanie C. Zechman
 Carol S. Zeiber
 Elma Zeiber
 Erma & Robert Zelechowski
 Ms. Yolanda E. Zellers
 Patricia A. Zettelmoeyer
 Allen & Janet Zimmerman
 Amos S. Zimmerman
 Barbara A. Zimmerman
 James & Jeanne Zimmerman
 James & Marjorie Zimmerman
 Jocelyn S. Zimmerman
 Laird K. Zimmerman
 Lee & Nicole Zimmerman
 Madeline R. Zimmerman

William & Beverly Zimmerman
 Zion Lutheran Church, Turbotville
 Arliss K. Zwally
 L. Eugene Zwally
 David Zweier

We make every effort to ensure the accuracy of our donor lists. Should you notice errors or omissions, please notify the Development Office at 570-522-2685.

Evangelical Community Hospital's *Community Impact*

Evangelical Community Hospital employees are dedicated to helping others through both their work and volunteer service in the community. When asked to document their community service hours in fiscal year 2017, nearly 300 full-time and part-time employees tracked and reported their time. The following statistics show the impact these employees made in the surrounding communities during the fiscal year:



MEMORIAL REPORT FISCAL YEAR 2017

Sidney J. Apfelbaum
Roger & Denise Haddon

Joan E. Austin
Linda & Mark Kardohely

Katherine S. Bailets
Cas & Dolly Smerroskie

Barbara A. Baker
Barbara & John Sirianni

Darlene M. Bastian
David W. Bastian

William C. Beckley
Mary E. Beckley

Mark R. Berge
Iva G. Berge

Beatrice M. Bieber
Joyce Wilson

Fujiko U. Biggaro
Fujiko S. Robbins

Mary L. Bird
Donald L. Bird*
Dottie & John Bird
Terry & Luanne Prowant

Betty Brininger
Laverne L. Radel

Theo M. Cechman
Kermit & Arlene Kohl

Charles (Charlie) G. Cole
Evangelical IV Team
Mary A. Hague
Gary & Sandy Sojka
Maredith & Michael Spangler

Leslie G. Cooper
Donald & Nancy Brown
University of West Georgia-
Biology Department

Adah & James G. Corman
James C. Corman
GE Foundation

Barbara (Barb) L. Cornelius
Joyce M. Campbell
Holly J. Clark
David & Roberta Cornelius
Shirley S. Diehl
Doris M. Moore
Earle J. Moore
Nancy B. Moore
Steinman Communications, Inc.

James (Jim) W. Courter
Shawn & Dee McConnel
Straub Metal Employees

Peggy R. Cromis
Freeman L. Cromis Jr.

Robert (Bob) D. Curtis
Noel K. Curtis

Shirley K. Dailey
Harry L. Dailey

Elizabeth H. Dauberman
Cardinal Concepts Group
James L. Harmon*
Michael & Joyce Treas

Pauline Davenport
Raymond E. Davenport

Thomas W. Davidson
Edward & Jo Adams
Norma J. Hunter
Fred & Rachel Keister
Roger & Mary Kennedy
The Mullin Family

Evelyn V. Dewire
Bill & Janie Bloom
Coleen S. Cameron
Barbara A. Hause
Harold & Jeanne Lawrence
Henry W. Longenberger

James R. Diemer
Todd L. Remington
WHWTCNO

Violet D. Dietrich
Tom & Avis Hans
Kiwanis Club of Lewisburg
Lewisburg Borough Council, Mayor,
Manager, & Solicitor
Judith T. Wagner

Mildred V. Divers
Rhonda Schack, Sonja, Alex, & Brenda

Peggy (Peg) A. Doebler
Connie L. Boughter
Mark & Kim Chrysler
Walter & Judith Edwards
James & Patricia Garvin
Norma L. Gray
Glenn & Kathleen Meyer
Deb Schultz

Donald D. Douglas, MD
Dorothy V. Douglas

Robert E. Dunkerly
Mary O. Dunkerly

Manuel R. Duque
Gale S. Duque

Rollin (Cub) F. Eschbach
COLDWELL BANKER Penn One Real
Estate, Inc.

Galen E. Ettinger
Laree Bowersox
Bob Clark
Raymond & Julie Crissman
Marlene R. Ettinger
Kenneth & Nancy Galliher
Craig & Veronica Klesh
Neighbors of Galen Ettinger
Scott Rine
Soaring Eagle Security, Inc.
David & Susan Surgala
Susquehanna Valley Mall
Gary & Kathy Thomas
Connie Irene Wagner

Melvin M. Finck
Harry E. Boyer
Donald R. Erdley
R. R. Donnelley
Warren & Judy Reed
Wayne M. Stahl

Eliza Fisher
Alvin Fisher Jr.

Linda L. Frew
Paul & Barbara Ezdebski
Paul & Jill Fodness
Henry W. Frew
Bill & Ruth Green
MaryAnn & Tim McConnell
Wally V. Nguyen
Colleen Olaf
Radiology Residents at Geisinger
Medical Center

Stuart E. Gelnett
Charlotte Gelnett Beiler
Kathleen Bishop
Jean L. Henry
George & Sandra Rompella
Nancy J. Walker

Richard C. Gemberling
Michael & Bonita Hoch

David A. Grimm
Alice Totten

Carolyn J. Grove
Ms. Kendra Aucker & Dr. Margaret
Lehr-Devolld
Joseph Heintzelman

Ethel I. Gutshall
The Gutshall Family
James & Cecilia Seay

Leona F. Hackenberg
Daniel & Gloria McDavitt
Laurisa G. Morris
Meda E. Struble
Cliff & Diane Valentine

William H. Hackenberg
Marion A. Hackenberg

Donald D. Hans
Community Services Group
Staff - Sunbury
Gloria A. Hans
Charles & Nancy Snyder
Romyne Swisher
Trinity Oak Grove Lutheran Church

Charlotte A. Hartranft
Fujiko S. Robbins

Gretchen E. Henry
Joanne R. Beatty
Kevin & Kathleen Beatty
Jean L. Henry

Mary E. Herring
Dawn F. Lewis

Jacqueline (Jackie) I. Herron
Carolyn S. Aycock
Scott Barnes
Christkindl Market of Mifflinburg, Inc.-
Executive Board
Shirley Dickinson & Family
Tim & Kim Eshelman
Robert & DeOnne Gronlund
James L. Herron
Thomas & Christine Herron
The Open Door Gallery
West Milton State Bank
Jane Wilkerson
Carol E. Young

Connie M. Heyman
Chris & Warren Abrahamson
Judith P. Ashby
Martha & Alan Barrick
Tayler Bray
Tina L. Burgess
Joseph & Patricia Ciabocchi
Kay Holdren
David & Lois Hunter
Charlotte & William Laverty
Donald M. Messimer Jr.
Steven C. Miller & Ellen Gauthier
Greg & Michelle Munster
Bill & Jan Pursel
The Red Hat Swirlers
Dr. & Mrs. Donald C. Steckel

Matthew E. Hixson
Sharon L. Hixson

Titus B. Hoover
Titus & Mary Hoover

Howard (Bud) H. Houtz
Thelma Houtz

George P. Hower
Dorothy R. Hower

Charlotte S. Hufnagle
Robert & Jeanne Jolly
Mary E. Snyder

Robert Hufnagle
Robert & Jeanne Jolly

Theodore F. Hufnagle
Tina L. Burgess

Marshall W. Hull
Frederick & Beverly Rich
TOPS PA 9306 Muncy

Gerald (Jerry) F. Kling
Donna S. Kling

Richard (Dick) L. Kling
Anonymous
Joyce K. Coup
Criswell Acres
William & Shirley Good
Robert O. Hobbes
Mr. & Mrs. Michael Martin
Mifflinburg Young Farmers Association
Betty Jane Mincemoyer
Joseph Noll & Linda Boop Noll
Barney* & Flora Price
Ileen Ranck
Arlin & Rebecca Rishel
Judy & Only Rishel
Kenneth & Rhelda Rishel
Mr. & Mrs. Larry Savidge
Larry A. & Janice Seibert
The Shultz Family
Susan L. Trate
Dorothy & Nevin Wert
Wesley & Deborah Wrights

Eleanor L. Kuhns
Ronald J. Kuhns

James F. LaForme
Shirley A. LaForme
Virginia Lord

Bruce E. Laudenslager
Mary K. Laudenslager

Marilyn (Lynn) M. Lawson
James G. & Patricia Apple
Martha & Alan Barrick
Joanne R. Beatty
Elise A. Mills

Rose Lechleitner
Paul D. Farber

Kathryn M. Leitzel
Warren & Christy Abrahamson
Phyllis Ahlborn
Bucknell University-Division
of Communications
Lori & Stan Bullard
Tina L. Burgess
Jane S. Graybill
Thomas & Terri Heimbach
James & Eleanor Heintzelman
Kay Holdren
Heidi Noll Joseph & John Joseph
Harry E. Leitzel
Katarina Lopez
Kathryn & Kenneth Noll
Kenneth & Sonja Noll
Barry & Laura Rishel
Judy & Only Rishel
Donald & Mary Lou Russell
Norma R. Schutter
Susquehanna Button Club

George R. Lesko
Monica & Dan Weatherly

Margaret (Mags) L. Loss
Grant M. Kleppinger
Doris M. Moore

Troy L. Martin
Lewis L. Martin
Fujiko S. Robbins

Nancy C. Maturani
Doris M. Moore

Roy & Verna Maurer
Jean M. Maurer

Elaine B. Mehle
Charlotte & William Laverty

Priscilla A. Merritt
Kathryn Irwin Lentz

Harold (Red) L. Mertz
Mary K. Mertz

Wilma M. Miller
Tina L. Burgess

Donna L. Minard

Alan & Deborah Berger
Bill & Jeanne Clarke
Vaughn M. Foxwell Jr.
Nancy Gearhart
James P. Herbster
George Minard
Jerry R. Mitchell
Audrey Moree
Janice Moree
Marshall Rea
Sea Colony East Phase VII
Michael & Beth Sellman
Ronald Wickwire
William & Elaine Wolf

Theodore R. Morris

Kathryn Morris

Carol A. Moyer

Beaver Springs Volunteer Fire
Company Ladies Auxiliary

Doris R. Mull

Tina L. Burgess
Evangelical Community Hospital
Emergency Department
Sharon S. Hunter
Thomas & Carolyn Mull
Thomas & Alice Stelter

Robert K. Mull

Dauntless Hook & Ladder Co.

Olive J. Musser

John & Linda Courter

George D. Nedostup

Chris & Peggy Bouton
Tina L. Burgess
Kay Holdren
Steven C. Miller & Ellen Gauthier
Anita Nedostup & Family

Barbara D. Norwood

Rita J. Wolfe

Sally E. Nyquist

Marion L. Huffines

Gertrude F. Pardoe

Robert F. Pardoe Jr.

Roger Perisch

Fujiko & Franklin Robbins
June Robbins & Toru Yakura
Bryce & Yolanda Uytiepo

Alice Permiceo

Carol A. Salatti

Cheryl D. Poorman

William & Carol Smith

Alfred B. (Barney) Price

Kathleen A. Bailor
Mary Ellen Bartholomew
Sandra S. Beiler
Judith A. Campbell
Rick & Judy Coup
Michael & Sharon Craig
Frederick & Sandra Gilbert
The Gray Family-Clara Neele, Robert,
Karen, & Skip
Ron & Barbara Huff
R. Michael Kaar
Frederick & Virginia Kessler
Marjory C. Ohl
Chester & Ellen Pribble
Flora Price & Children
Roy B. Price
Bart & Joyce Reichard
Fujiko & Franklin Robbins
Edith B. Seaton
Isabelle Sheedy
Benny & Holly Snyder

Hajnalka Puskas

Fujiko S. Robbins

Rita K. Quinlan

Fujiko S. Robbins

Bud & Helen Ranck

Jeffrey & Debra Ranck

Carl L. Reese

L. Jean Reese

John E. Reichner

Shirley J. Reichner

Rita M. Remaley

Ted & Jackie Matlow
Robert F. Remaley Sr.

Lois B. Remer

Kathryn Irwin Lentz

Lois & Murray Remer

Kathryn Irwin Lentz

Don & Mae Rifenburgh

Harry & Kandi Renn

Elmer (Roland) R. Ritzman

Nancy L. Ritzman

Mary (Vickie) V. Robbins

Gene N. Walker

David T. Ruch

Suzan Ruch

Joyce W. Sanner

Dennis B. Sanner

Scott C. Seaman

Tina L. Burgess

Kevin E. Shafer

David & Dayna Bickhart
Tina L. Burgess
Margaret Cole
Judith (Morgan) Comunale
Family Practice Center, PC
Marcia M. Landrum
Patricia E. Master
Irene Morgan
Rusty & Carole Morgan
Laurisa G. Morris
Platte View Ranch Inc.
Elizabeth R. Remsnyder
Margaret Rochlitz
Douglas & Debbie (Morgan) Rodis
Kathleen Shafer & Family

C. Duane Sharp

Darlene M. Sharp

Dorothy J. Shirk

Creative Services Team at Penn
State University
Sterling Middle School Physical
Education Department

Myrtle R. Shirk

Diane Wilson & Richard Relyea

Robert D. Sites

William P. Anderson III
Anonymous
Jonathan A. Apple
Angela Brouse
Evangelical Community Hospital
Plant Engineering
Patti Faux
Theresa Henry
Kay Holdren
Deanna L. Hollenbach
Brandy L. Kift
Kelly-Ann Kreisher
Keith R. Mabus
Bill Maloney
Scott E. Mensch
George T. Rudy
Ron Specht
Brenda K. Swineford
Niki Weber

Mabel R. Smith

Ilsa A. Grieser
Fred & Hazel Roush
Sunbury Broadcasting Corp.

Theo & Harold Smith

Connie & Steven Ravert

Paul T. Snook

Ethel A. Snook

Crystal D. Snyder

Jesse & Laura Ramsey

Freda A. Snyder

Doris M. Moore

Susan A. Snyder

Tina L. Burgess
David K. Snyder

Thomas L. Snyder

Robyn A. Snyder

Melva M. Sowers

Sandra Evans
Sarah Eveland

William L. Sowers

Margaret Sowers

Nancy B. Spangler

Ann W. Gelnett

Cindy L. Spinello

Ruth U. Rees
Emma J. Spinello
Union County Housing Authority

Ralph L. Stahlnecker

Roy & Nancy Brenner
Lori & Stan Bullard
Bud & Margaret Drick & Family
Jay & Julia Engle
Julie Granados
Gerald & Ruth Greenly
Eric & Gwen Hull
Betty Jane Mincemoyer
William & Linda Morrisey
Tom & Peggy Reimensnyder
The Shively Family
Nancy S. Slease
Jill D. Stahlnecker
Tom & Beckie Stahlnecker
Bill, Anne, Lisa, & Gini Weigold
Scott & Bonnie Wheeland
Ronald & Vivian Wolfe

Naomi B. Stauffer

Anonymous

Richard P. Steffensen

Elsbeth Steffensen & Family

Joel H. Stuck

Lori & Stan Bullard
Harry & Jane Moyer

Shirley A. Stuck

Lori & Stan Bullard
Gary & Pat Earnest
Harry & Jane Moyer
Mary K. Nipple

Jackie L. Stuckey

J. Daniel Pursel

Betty L. Swartzlander

Larry & Carol Snook

Arthur G. Thomas

Harriet Lawrence

Forrest A. Thursby

Mabel E. Thursby

Alice K. Trapp

Martha & Alan Barrick
Richard & Donna Schuck

Jack H. Treas

Jinny Treas

Robert W. Ulmer

Betty P. Ulmer

JoAnn VanCott

Lamont & Cynthia Smith

Gladys C. Veley

Joseph E. Veley Sr.

Gloria A. Velotti

Robert & Debra Demuth-Lonce
& Family
Robert & Doreen Durgg
Ronald & Lisa Durgg & Family
Dawn H. Gallagher
Jody & Lauren Giannone
David & Lestia Grill
Frank & Sally Krue
Laurisa G. Morris
Debra White & Family

Jack D. Wagner

John & Debbie Miller
John & Glenda Sheaffer
Deane & Jeanne Shively
The Shively Family
Beverly I. Wagner

Cheryl A. Walter

Allen W. Walter
Ruth J. Williams

Orphia R. Walter

Sonny & Almareta Hupp
Lewisburg Young Farmers Association
Cynthia J. Walter
Harold & Valores Walter

Patrick H. Washington

The Borrelli-Washington Family
Mr. & Mrs. George Frank

Lorraine F. Watson

Stewart R. Watson Jr.

William H. Weber

Nichole Weber, Olivia & Nora

Karen E. White

Carolyn I. White
Richard C. White

Debra L. Wilson

Doris M. Wilson

Koji Yamada

Fujiko S. Robbins

Slava I. Yastremski

Irina R. Yastremski

Harry L. Yerg

Gloria E. Yerg

Arlene R. Zeiber

Tina L. Burgess

Maurice E. Zeiber

Carol S. Zeiber

Paul P. Zimmerman

Jocelyn S. Zimmerman

HONOR REPORT FISCAL YEAR 2017

All who cared for Galen Ettinger

Soaring Eagle Security, Inc.

Dr. & Mrs. A. Loren Amacher

Dr. & Mrs. Ralph H. Starkey

Doyle D. Ashburn, DO

Bill & Jan Pursel
Nichole Weber

Kendra A. Aucker

Dr. & Mrs. Arthur H. McTighe

Gary S. Ayers, DO & Lisa S. Ayers, DO

Bruce & Carol Hoffman
Nancy M. Rovenolt

Lisa S. Ayers, DO

Kermit & Arlene Kohl

Sam S. Bang, DO & Staff

Harriet Lawrence

Brian A. Batman

David E. Boyer
Lenora M. Heywood
Bruce & Carol Hoffman
John H. Houseknecht
Benjamin H. Martin

Louis H. Betz, MD

Florence J. Hayes

Darshan K. Bhangdia, MD

Bruce & Carol Hoffman

Christopher R. Brancato, MD

Lenora M. Heywood
Jay & Anna Ramer

Gilbert P. Brillat

Susan Perkins Brillat & Thomas Brillat

Michael D. Brown, MD

Nancy J. Ard
Ronald & Shirley Peters

Sandra K. Charles, DO

Judy A. Inns
Edward & Judy Robinson

Danny H. Cho, MD

Dolores J. Patton

Charles L. Cole Jr., MD

Nevin & Shirley Anspach
Richard & Susan Hassenplug
Bruce & Carol Hoffman
Kenneth & Molly Maneval
John B. Mutschler
Helen D. Raski
Richard Relyea
Joy G. Roush
Robert & Jean Varano

Michael Daniloff

Arthur H. McTighe, MD

Robert E. Davis, DO

James W. Hartzel
Virginia Whitenight

Thomas F. Dominick, MD

Ronnie & Diane Laidacker
Hope E. Paul
Dr. & Mrs. W. Gale Reish

Michael A. Donegan, DO

Carl & Pam Haga

Ray T. Douglas, MD

Carl & Pam Haga
Byron & Gloria Patterson

Matthew R. Eager, MD

Richard Relyea

Evangelical Community Hospital Emergency Department

Mary & Douglas Candland
Mariann C. Kneiss
Robert & Sheri Spickler

Evangelical Community Hospital Imaging Services

Connie & Steven Ravert

Evangelical Community Hospital Infusion Services

Mary & Douglas Candland

Evangelical Community Hospital Nursing Staff

Evangelical Community Hospital Nurses' Week Committee

Evangelical Community Hospital Pre-Hospital Services

Angelo & Rose E. Distefano

Evangelical Community Hospital Physicians

Dean & Janet Albright
Clyde A. Chappell
John & Sue Griffith
Carl B. Heisey
Dale & Alice Murray

Georgina A. Ferriero, PA-C

Edward & Judy Robinson

William K. Flatley, DO

Suzan Ruch

Fry Grandchildren born at Evangelical

Leire & Katherine Fry

Joseph B. Gallagher, MD

Dennis & Janet Reed

Harlen W. Gessner, MD

Emma J. Gessner

Marie & Larry Ginsburg

Eileen R. Barnes

Suzanne Greb, DO

James & Candace Benner
Oscar & Ellen Felmey
James & Clara Hemrick
Dorris J. Keen
Donna S. Kling
Mary K. Rainey

Scott M. Hartzell, MD

Dr. & Mrs. W. Gale Reish

Charles E. Heid, MD

Fujiko S. Robbins
Stanley Shirk

Jay Holthus, DMD
Marianne & Jere Motto

Hospice of Evangelical
Charlotte & William Laverty

Keith A. Johnson, PA-C
Stan & Bev Antonaitis
Lou Ann Sheets
Ruth J. Williams

Ayn H. Kerber, MD
Friedrich & Jacquelyn Schaeffer
Bernita K. Wert

Katrina, Carleton & Brian Knisely
Charles & Karin Knisely

Susan Jane Rightmyer Kodlick
Susanna Kodlick Jackson

Thomas A. Krebs, MD
Jean C. Kreighbaum
Edward & Judy Robinson

Blaise Latriano, MD
Jean W. Re

Kathryn M. Leitzel
Chris & Warren Abrahamson

Paul S. Lin, MD
Michael Dupnock
Harold U. Flanders

Petra Lynch, MD
Nevin & Shirley Anspach
Richard & Helen Barto
Florence J. Hayes
John L. Holmes, DMD
Michael & Grace Kreiner
Jay & Anna Ramer
Nelle Rote
Robert & Elizabeth Sabol
Dennis B. Sanner
Grace L. Shipe

Thomas L. Martin, MD
Larry & Terry Clark
Kenneth & Eva Keister

Shawn P. McGlaughlin, MD
Ed Henry

Kenneth & Molly Maneval
Freeman & Dottie Rathfon
Dennis & Janet Reed

Randi J. McLeod, MD
Suzan Ruch

Linda S. Messner, CRNP
Bill & Connie Bastian

George C. Miller II, MD
Larry & Terry Clark
Jennifer D. Sullivan

Joshua R. Miller
John & Debbie Miller

James W. Morgan Jr., MD
Nancy Jarrett
Alfred L. Martin
Nancy M. Rovenolt
Betty C. Wentzler

Christopher J. Motto, MD
Lenora M. Heywood
Betty Jane Mincemoyer
Marianne & Jere Motto
Dianah Reamer
Nancy M. Rovenolt
Gayle D. Shaffer

Bradley K. Moyer, MD
Michael & Veronica Irvine
Suzan Ruch

Joseph M. Mucciolo Jr., MD
Anthony B. Ludovico
Connie & Steven Ravert
Nancy M. Rovenolt
Robert & Elizabeth Sabol

Lisa A. Mucciolo, MD
Lawrence Splitt

Bradley J. Mudge, DO
David & Bernice Apple
Nancy Jarrett
Nancy M. Rovenolt
Betty M. Steppe

James R. Patterson, MD
James E. Brouse Sr.
William & Martha Gaskin

Ken & Leone Latshaw
Harry R. Miller
Dennis B. Sanner
Earl & Lois Yoder

John H. Persing, MD
Stan & Bev Antonaitis
Judith A. Blee
Larry & Terry Clark
Delores D. Henson
Susan J. Hickman
Nancy L. Kuhn
Nelle Rote
Lorraine P. Wagner
Madeline R. Zimmerman

Lorna M. Ranck, RN
Robert F. Remaley Sr.

Julia E. Redcay, DO
Jennifer D. Sullivan

Matthew W. Reish, MD
Romaine H. Bartholomew
Marvin Heimbach

John E. Rice III, MD
Coy & Lucy Crawford

Robert D. Scott, MD
Suzan Ruch

Lori J. Shrawder, RN, BSN
Robert F. Remaley Sr.

Douglas A. Spotts, MD
Florence J. Hayes
Betty Jane Mincemoyer
Nancy J. Walters
Doris M. Wilson

Dr. & Mrs. Donald C. Steckel
Carol A. Steckel

**Russell Stankiewicz, MD &
OB/GYN Staff**
Pat Rosboschil

Todd W. Stefan, MD
Jack L. Galer
Lenora M. Heywood
Nancy M. Rovenolt

Todd W. Stefan, MD & Staff

Donald W. Klingerman

Elam R. Stoltzfus, MD

Kevin & Wendi Baker
John & Barbara Benner
Howard L. Benninger
Dr. & Mrs. Louis Betz
Robert Brigham & Mary Ann Brigham
Drs. Michael & Jan Brown
Edith Burkholder
Drs. David & Sue Ellen Castellan
Christ Wesleyan Church
Paulette Conrad
Gary C. Cooper
David & Jennifer Corderman
Alyssa & Gabor Czivisz
Robert & Jean Deitrick
Lester & Ardis Diller
E. L. Smeltz Automotive
Donna & Michael Ebersole
Mark & Becky Eveleth
Quentin & Virginia Feitner
Friends of The Family Place
Matthew & Heather Funk
Furmano's
Dave & Jody Geise
Teresa & Linford Good
Doug & Leona Graybill
Thomas & Margie Heggenstaller
Brandon & Brianna Herman
Glenn & Sue Hertzler
Kenneth & Elnora Horst
Alvin & Rose Huyard
Matthew & Angela Keefer
Thomas & Judy Kishbaugh
Daniel & Gladys Kolb
Landis Pastured Poultry
Marcus M. Lehman
Paul S. Lin, MD
Ada Longenecker
William & Carolyn Mast
Medical Park Ear, Nose & Throat
Barbara L. Metzger
George C. Miller II, MD
Douglas & Jill Mills
Derrick & Krista Moser
Barbara MacMillan Mouw &
Andrew P. Mouw
Muddy Run Transport-Matthew Bergey
Jay & Rose Nissley

Maurice & Joyce Nissley
Brendon & Anita Nolt
C. David & Carol Ann Peachey
Kieran & Melissa Pelletier
Jaye & Larry Platt
Dr. & Mrs. W. Gale Reish
Douglas L. Ripka
Charlotte Sawyer
Ruth J. Shirk
Donald & Janice Snyder
Larry & Kim Snyder
Dr. & Mrs. Donald C. Steckel
Elvin & Molly Stoltzfus
Logan & Janae Stoltzfus
Nancy H. Stoltzfus
Parke & Marcia Stoltzfus
Timothy & Linda Stoltzfus
Jennifer D. Sullivan
Tyler & Deana Walter
Glen & Tina Weaver
Roy & Esther Wert
Karen & Butch Woolsey
James & Rozalyn Yannaccone
Stephen & Beverly Young
Linda Zechman

Joseph K. Tan, MD

Coy & Lucy Crawford

Paul E. Tarves, RN, MSN

Evangelical Nursing Management Staff

George Tenedios, MD

Steven & Marion Shields

John F. Turner, MD

Nancy Jarrett
Mary C. Kahl
Dolores J. Patton
Freeman & Dottie Rathfon
Nancy M. Rovenolt

H. Richard Ward, MD

Dahle & Shirley Bingaman

John M. Weston, MD

Bill & Connie Bastian
Theresa J. Fox
Richard Gilroy
Dr. & Mrs. W. Gale Reish

Jennifer L. Wetzel, PA-C

Irvin & Carolyn Snyder

Dawson C. Williams

Christopher D. Williams

Robert D. Yannone, DMD

Larry & Terry Clark

David M. Zelechowski, MD

Dorothy M. Anderson
Linda & Jim Boose
Coy & Lucy Crawford
Raymond E. Davenport
Keith & Sylvia Graver
James A. Holtzman
Leona A. Hummel
Eric G. Michael
Dean & Betty Ann Paul
Matthew & Sharon Silberman
William & Carol Smith
Richard & Mary Snook
Celia Stamm
Carol B. Swarner
Jessie & Marie Taylor
Erma & Robert Zelechowski
Jocelyn S. Zimmerman

Janet Zug

Charlotte & William Laverty



ENDOWMENTS

Endowment funding ensures the Hospital will continue to advance its mission of providing exceptional patient care and outreach to the community—regardless of the ways in which healthcare delivery and reimbursement change in the future.

Capital Needs

- Robert L. Rooke Fund for Capital & Equipment Needs

Community Health & Wellness

- W. Gale Reish, MD Fund for Community Health Education

Evangelical Lifeline

- Velma Swope Fund for Evangelical Lifeline

Charles P. Fasano, DO Memorial Lecture

- Charles P. Fasano, DO Memorial Lecture Fund

Hospice of Evangelical

- Michael Daniloff Endowment for Evangelical Hospice
- Glass Endowment for Evangelical Hospice

Pre-Hospital Services

- Frederick Endowment for Pre-Hospital Services

Scholarships

- Mae F. Keefer Nursing Scholarship Fund
- Crystal Snyder Fund for Nursing Scholarships

The Family Place

- Hoyle Endowment for The Family Place

Unrestricted

- Unrestricted Endowment at Evangelical Community Hospital



McCoy Crum, of Lewisburg, learns about bike helmet safety at a Community Health and Wellness event held at McDonalds in Lewisburg.

FINANCIAL REPORT FISCAL YEAR 2017

New Services, Increased Volumes Pace Growth

Despite a significant health system acquisition in the region and narrowing reimbursements, Evangelical Community Hospital successfully surpassed its financial goals for fiscal year 2017.

The achievement was fueled in part by the introduction of new services. Urgent Care of Evangelical was brought online in November 2016. It quickly surpassed operational expectations, funneling more than twice the expected volume of patients through the service each day. Pain Medicine of Evangelical opened in March 2017 and it too has surpassed performance expectations. Fiscal year 2018 will be the first full year for both services to support the Hospital's bottom line.

Volumes increased across many of Evangelical's services, particularly on the inpatient floors. Intensive care/stepdown was up 14 percent while the Medical/Surgical Unit cared for 5 percent more patients in fiscal year 2017 as compared to fiscal year 2016. Discharges in the Hospital grew by 6 percent.

Along with volumes, gross revenue increased—up 10 percent over fiscal year 2016 as did net revenue—up 4.6 percent over fiscal year 2016. Key service lines such as general surgery and cardiovascular services drove the spike in gross revenue. Additional increases are expected this year as the Hospital hired a vascular surgeon, a general surgeon, and an interventional cardiologist.

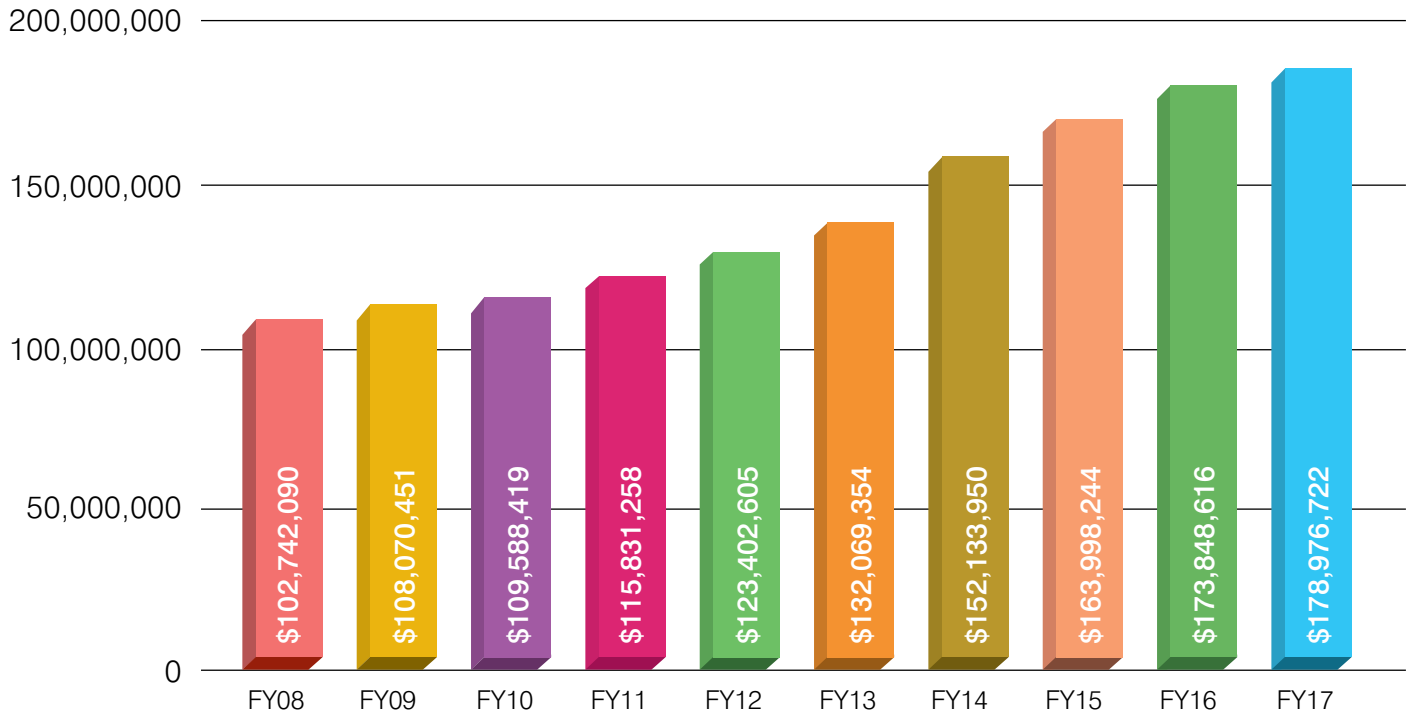
Evangelical's strategy of continued growth extends into fiscal year 2018. The Hospital finalized acquisition of Lewisburg Gynecology and Obstetrics at the start of fiscal year 2018. By the close, Evangelical will be unveiling its Center for Orthopaedics in a renovated facility on its campus. The new space is expected to facilitate volume growth in that key service line.

The Hospital's strong financial performance is expected to solidify its A- rating by Standard and Poor's, paving the way for additional expansion and renovation projects in the future.

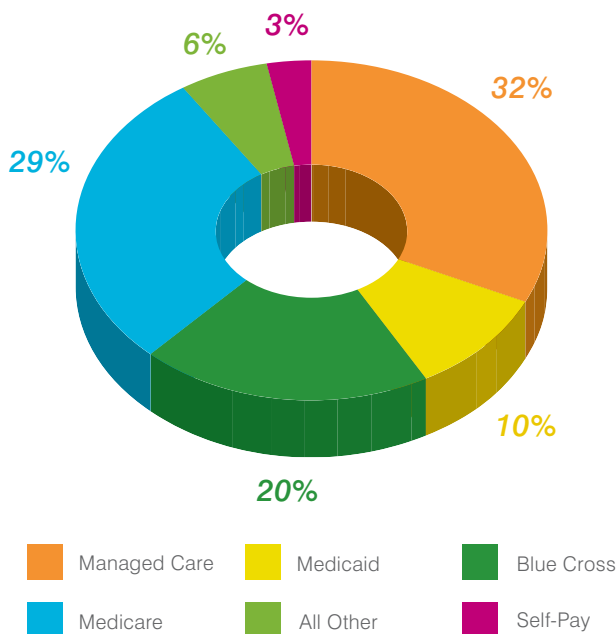
EVANGELICAL COMMUNITY HOSPITAL BALANCE SHEET JUNE 30, 2017

	Unaudited 06/30/2017	Audited 06/30/2016
Assets		
Cash and Short-Term Investments	\$37,294,420	\$36,188,108
Accounts Receivable	19,952,060	20,211,321
Third-Party Payor Settlements	0	0
Inventories	4,367,994	3,852,503
Prepaid Expenses and Other Current Assets	3,772,597	3,230,958
Total Current Assets	65,387,071	63,482,891
Pledges Receivable, Net	7,785	24,327
Funded Depreciation	86,915,202	79,554,573
Donor-Restricted Assets	6,449,883	6,149,814
Deferred Compensation Plans	1,799,042	2,214,815
Debt Service Funds	2,377,250	2,361,949
Notes Receivable	0	0
Property and Equipment, Net	127,740,101	123,261,411
Deferred Financing Costs, Net	820,681	862,011
Investment in Subsidiaries	4,751,307	4,203,948
Other Assets	3,940,897	3,964,442
Total Assets	\$300,189,218	\$286,080,181
Liabilities and Net Assets		
Current Liabilities:		
Current Portion of Long-Term Debt	\$3,155,773	\$2,962,920
Accounts Payable	5,890,215	6,329,497
Third-Party Payor Settlements	2,237,675	2,075,123
Accrued Expenses	7,681,386	8,816,615
Blue Cross Current Financing Advance	1,057,190	1,057,190
Accrued Payroll and Withholdings	4,652,401	4,839,463
Total Current Liabilities	24,674,640	26,080,808
Long-Term Debt	39,156,876	41,515,750
Accrued Health Insurance/Sick Benefits Expenses	5,623,136	5,870,473
Gift Annuities and Other Liabilities	226,569	262,132
Deferred Compensation	1,875,330	2,280,971
Estimated Medical Malpractice Claims Liability	1,093,544	1,130,246
Total Liabilities	72,650,095	77,140,380
Net Assets		
Unrestricted	220,660,240	202,416,280
Temporarily Restricted	1,163,067	1,096,453
Permanently Restricted	5,715,817	5,427,068
Total Net Assets	227,539,124	208,939,801
Total Liabilities and Net Assets	\$300,189,218	\$286,080,181

NET PATIENT REVENUE COMPARISON



SOURCES OF GROSS REVENUE



EVANGELICAL COMMUNITY HOSPITAL STATEMENT OF REVENUE AND EXPENSES

	Unaudited Fiscal Year 2017	Audited Fiscal Year 2016
For the Years Ended June 30, 2017 and 2016		
Net Patient Revenue	\$178,976,722	\$173,848,616
Other Operating Revenue	7,614,826	6,020,447
Investment Income	7,132,289	1,331,321
Fundraising Revenue	1,379,387	2,363,277
Total Revenue	195,103,224	183,563,662
Operating Expenses		
Salaries and Wages	64,244,290	62,673,217
Employee Benefits	18,970,951	15,676,398
Purchased Services	21,384,212	21,649,486
Other Expenses	10,699,576	9,292,719
Depreciation and Interest	14,389,483	14,510,321
Supplies	28,663,177	27,907,489
Loss on Refinancing of Debt	0	0
Total Operating Expenses	158,351,689	151,709,630
Net Income Available for New Services and Facilities	\$36,751,535	\$31,854,032

COMMUNITY BENEFIT REPORT FISCAL YEAR 2017

Essential to serving any community is understanding needs that are identified. In 2015, Evangelical Community Hospital collaborated with Geisinger Health System and community non-profit organizations located in the surrounding five-county region (Columbia, Montour, Northumberland, Snyder, and Union) to conduct a detailed community health needs assessment. The research identified four major needs:

- Improving access to behavioral health and substance abuse programming
- Positively impacting health through lifestyle decisions
- Improving access to healthcare
- Reducing the impact of socio-economic status on health outcomes

Efforts continued in fiscal year 2017 to work toward the end-goal of making a difference in the first three areas through 2019, when a new needs assessment will be completed. The final issue is addressed through the work on the first three.

A full version of the 2015 Community Health Needs Assessment is available at www.evanhospital.com.

Behavioral Health and Substance Abuse

As concern began to grow around the increased use and abuse of opioids in the area, Evangelical Community Hospital responded by making Narcan (Naloxone) kits available at no charge to first responders and schools in the hope that overdoses resulting in death could be reduced. The effort was made possible through a grant from The Pennsylvania Commission on Crime and Delinquency.

Since the inception of that program in early 2016, 168 kits have been distributed throughout the surrounding counties and 24 of those have been used to treat suspected opioid overdoses by police officers or firefighters who reach the scene first.

Supporting Healthy Lifestyle Decisions

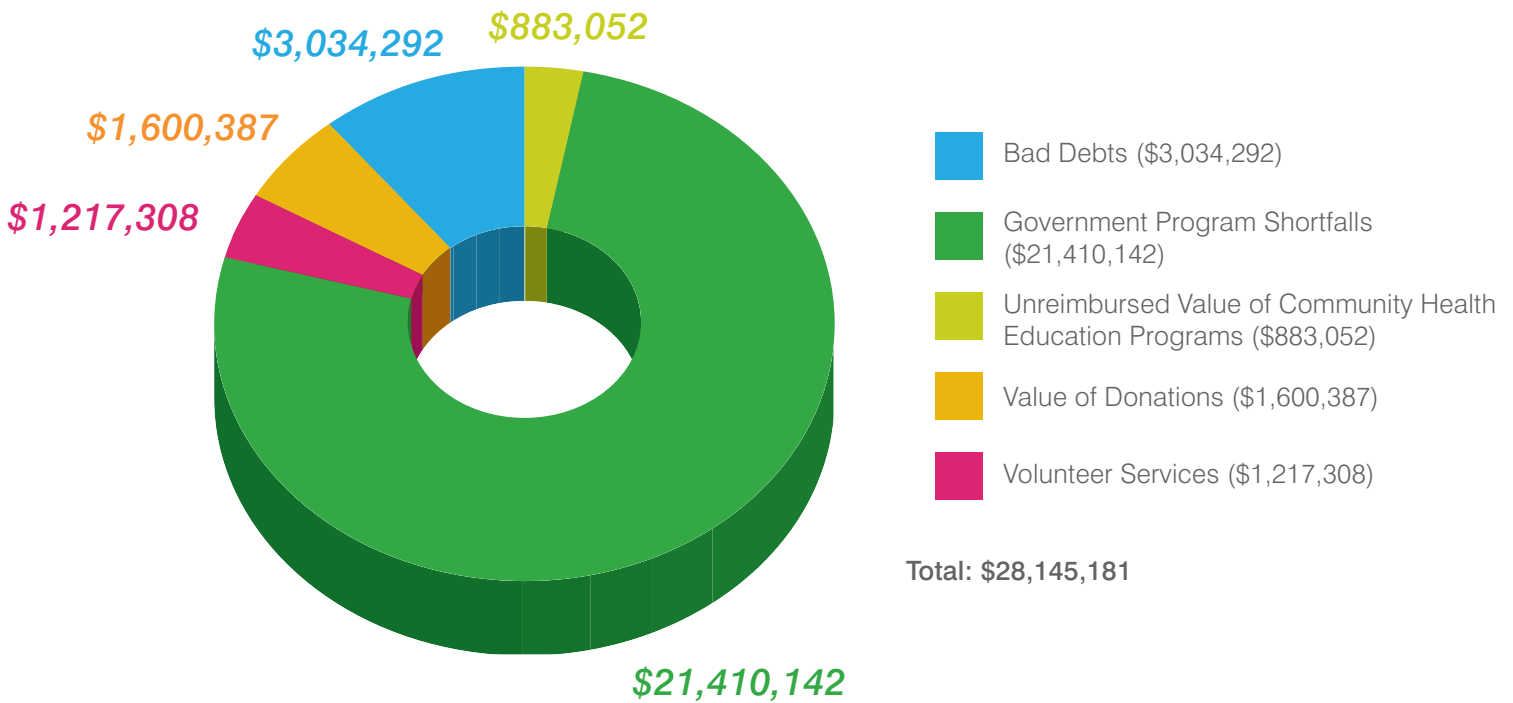
Community Health and Wellness offers Evangelical employees the opportunity to make positive healthy lifestyle decisions through the Daily Choices Wellness at Work program. The program offers opportunities to make wise eating choices, add exercise to daily routines, and keep track of vital health information to make good decisions. Daily Choices Wellness at Work is also made available to outside businesses for their employees.

Improving Access to Healthcare

Through low- and no-cost health screenings, more individuals have access to routine tests and screens, including comprehensive blood screens, heart health assessments, skin cancer screens, men's and women's health screens, and more. In addition, reduced-fee or free mammography and diagnostic imaging for the uninsured and underinsured has made it possible for women to be screened annually for breast cancer regardless of their insurance coverage.

The addition of Urgent Care to Evangelical's services also created a lower-cost access point for care for injury or illness that doesn't rise to the level of emergency care.

ACT 55 UNCOMPENSATED SERVICES





EVANGELICALTM
COMMUNITY HOSPITAL

One Hospital Drive, Lewisburg, PA 17837 | 570-522-2000 | www.evanhospital.com

